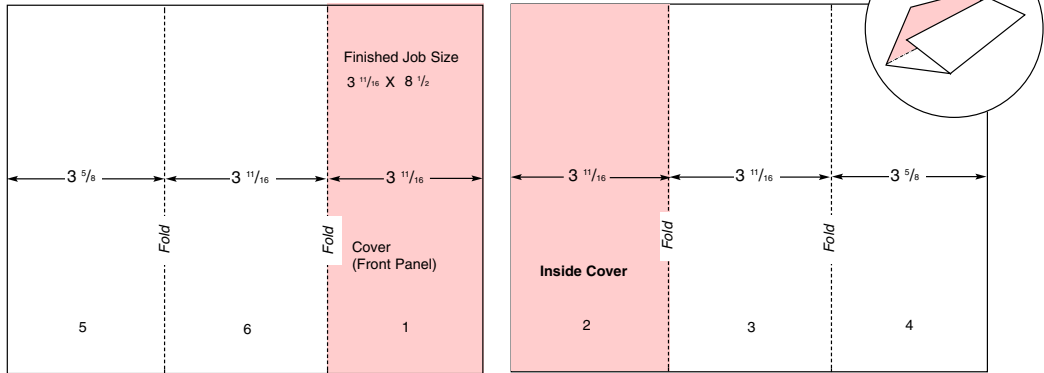


## FOLDS & DIMENSIONS

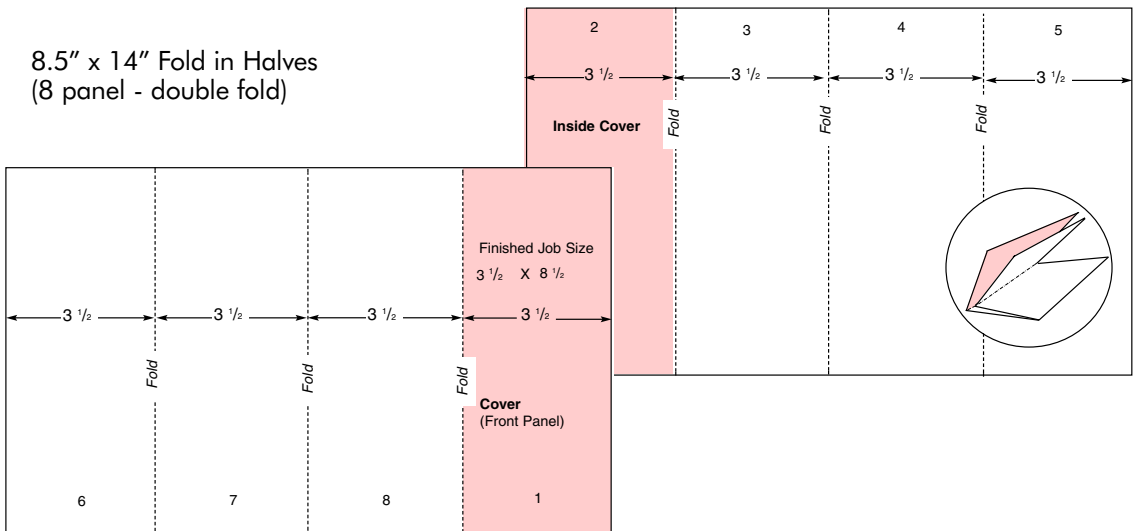
Fold marks for finished job sizes.

8.5" x 11" Letter Fold (6 panel, C-fold)

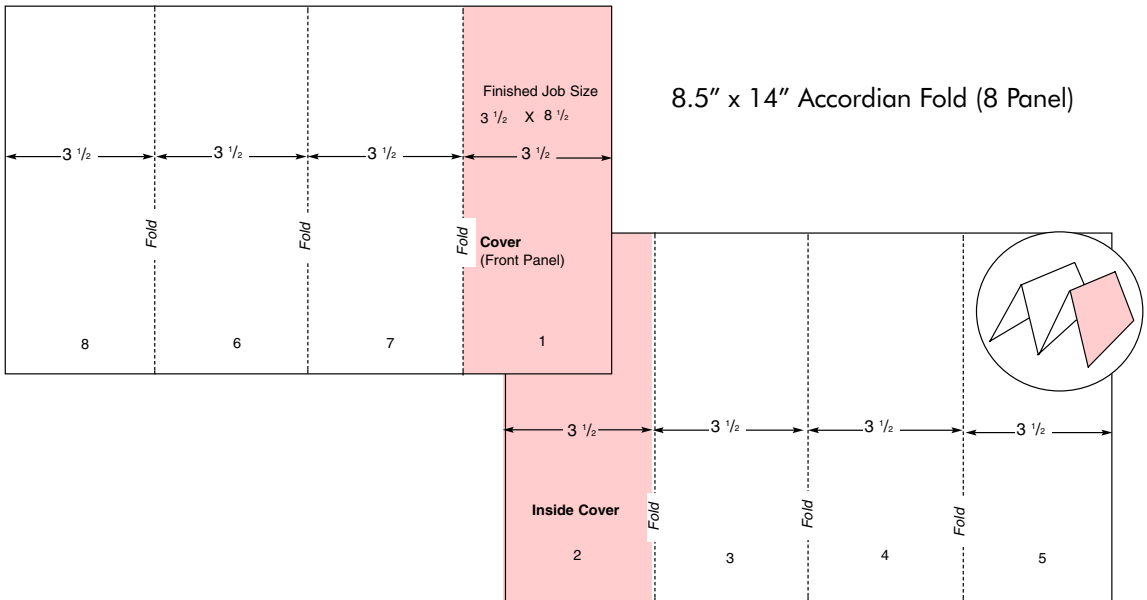
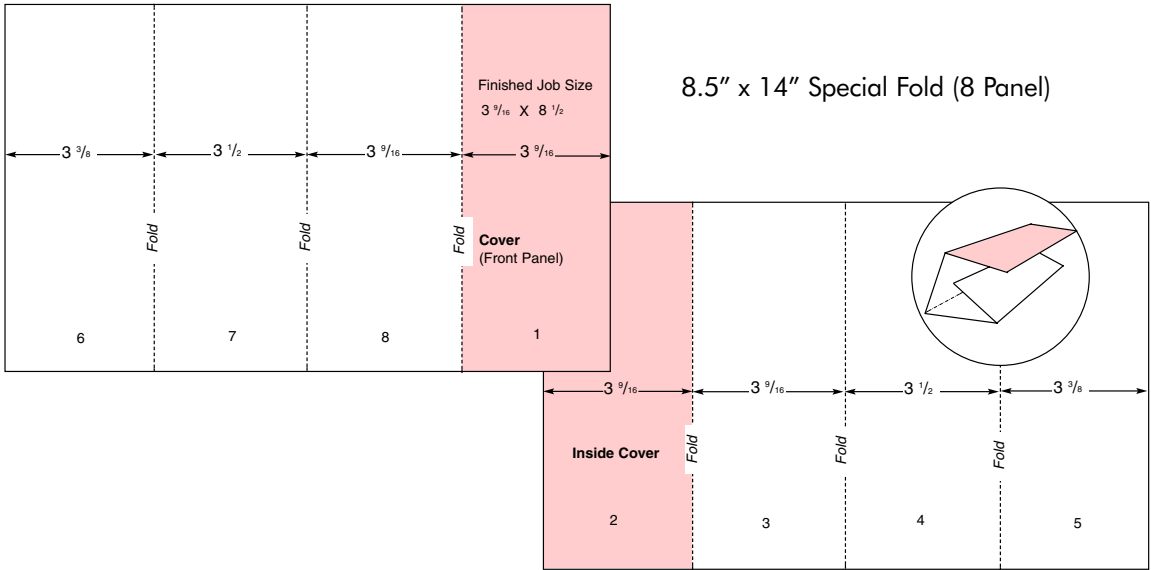
F-1-F



8.5" x 14" Fold in Halves  
(8 panel - double fold)

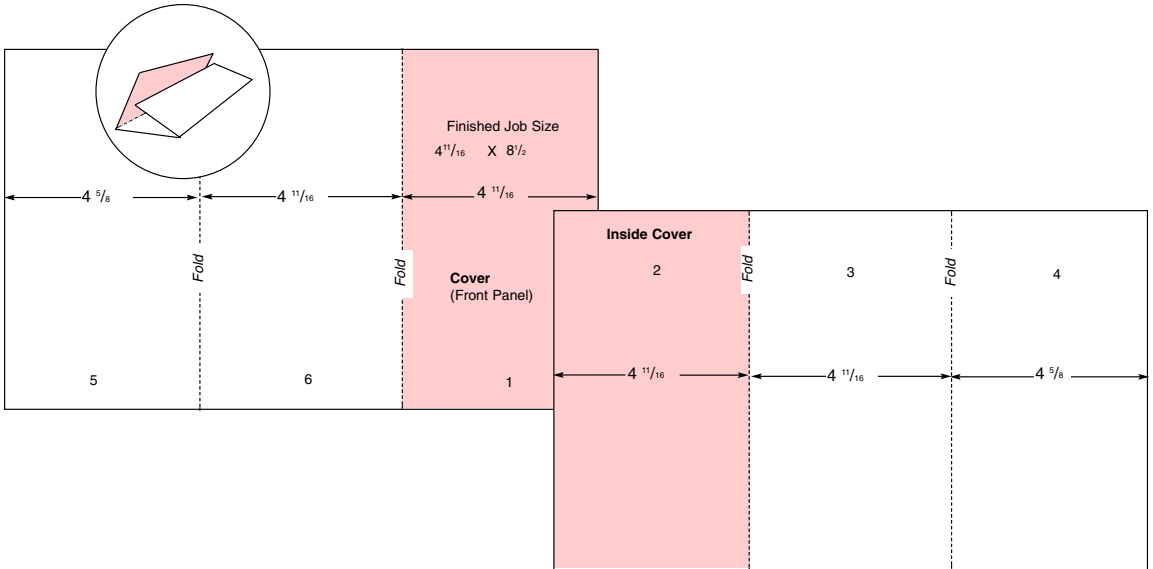


## FOLDS & DIMENSIONS

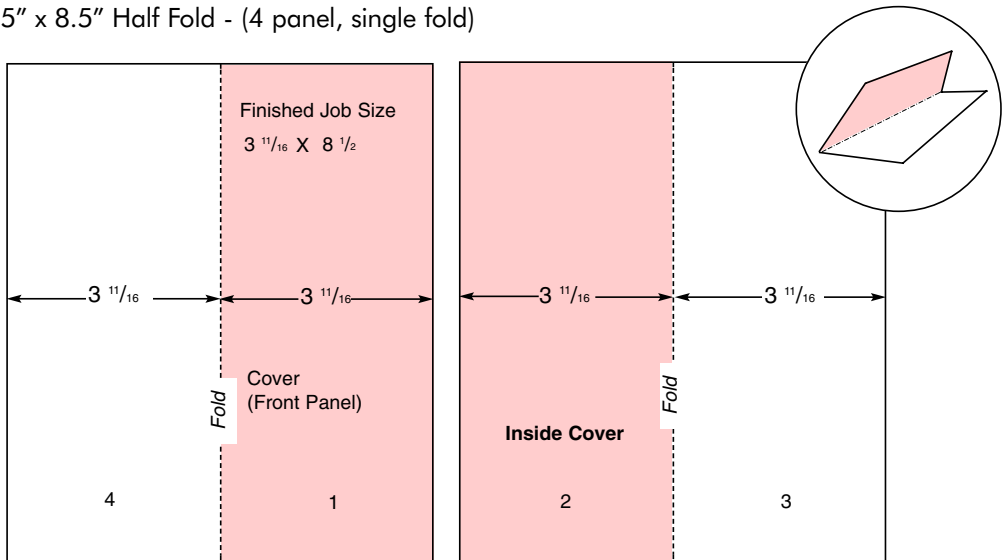


## FOLDS & DIMENSIONS

### 8.5" x 14" Letter Fold (6 panel, C-fold)

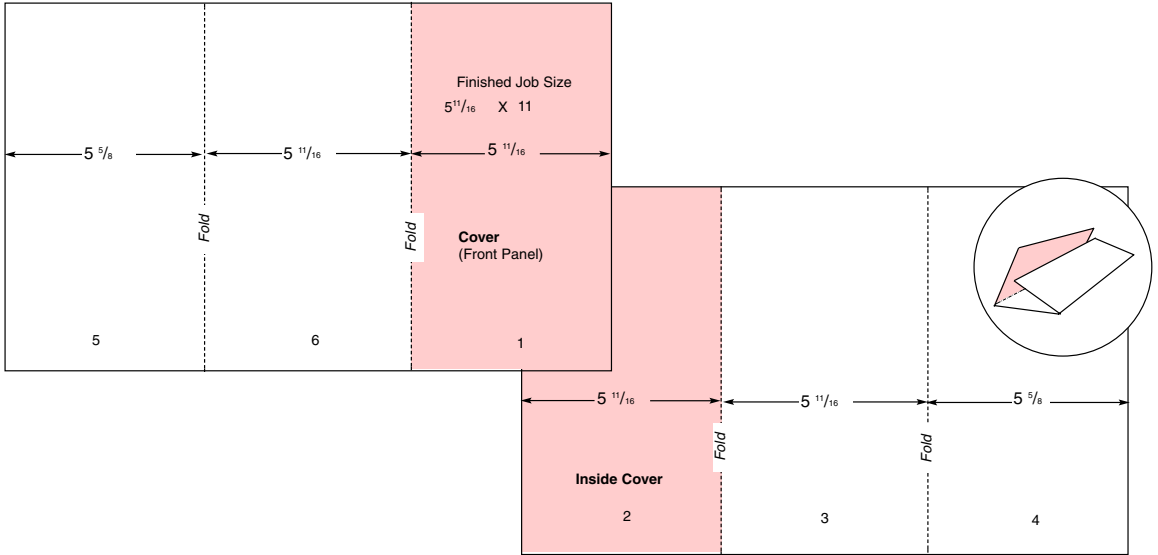


### 7.375" x 8.5" Half Fold - (4 panel, single fold)

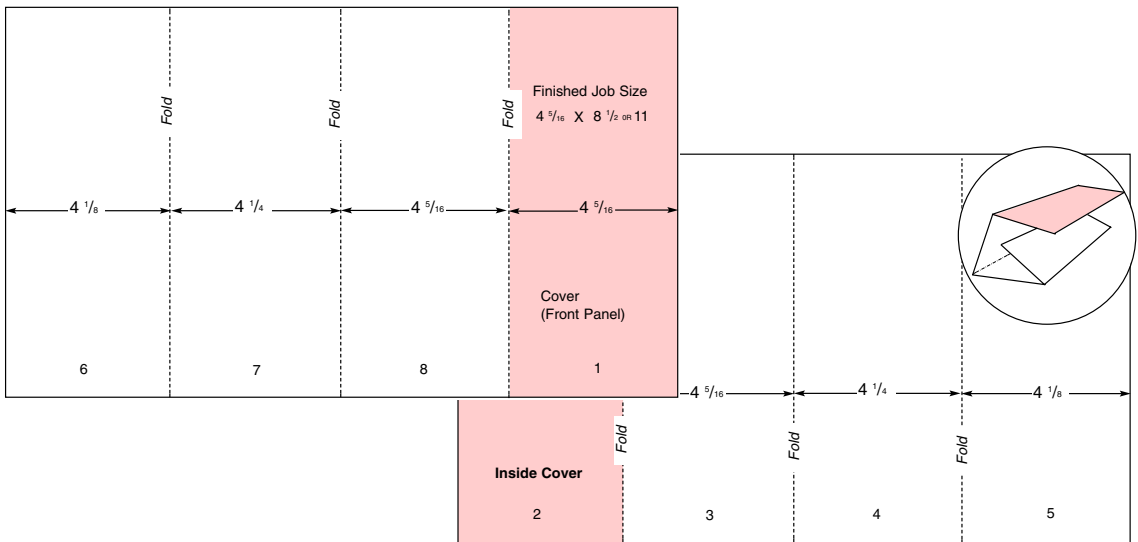


## FOLDS & DIMENSIONS

### 11" x 17" Letter Fold (6 Panel, C-fold)

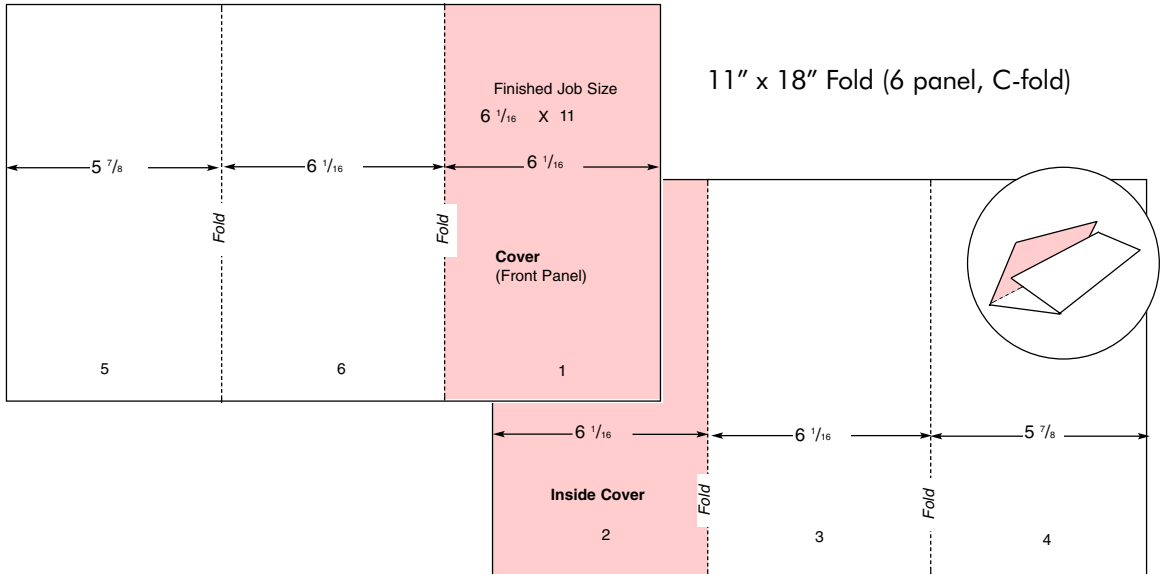
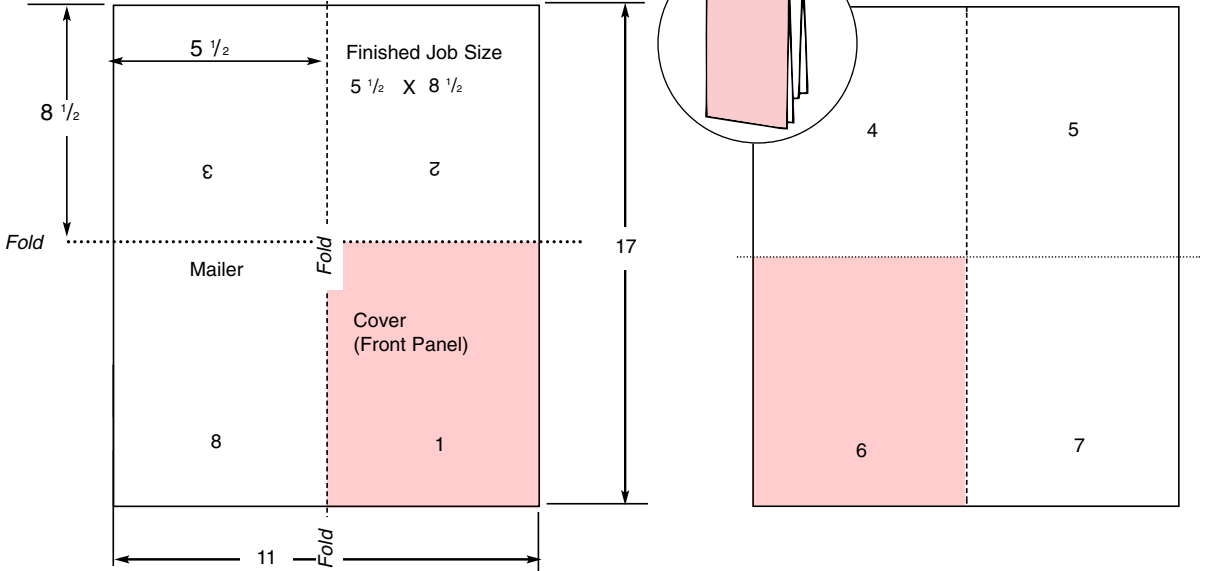


### 8.5" x 17" or 11" x 17" Special Fold (8 panel)

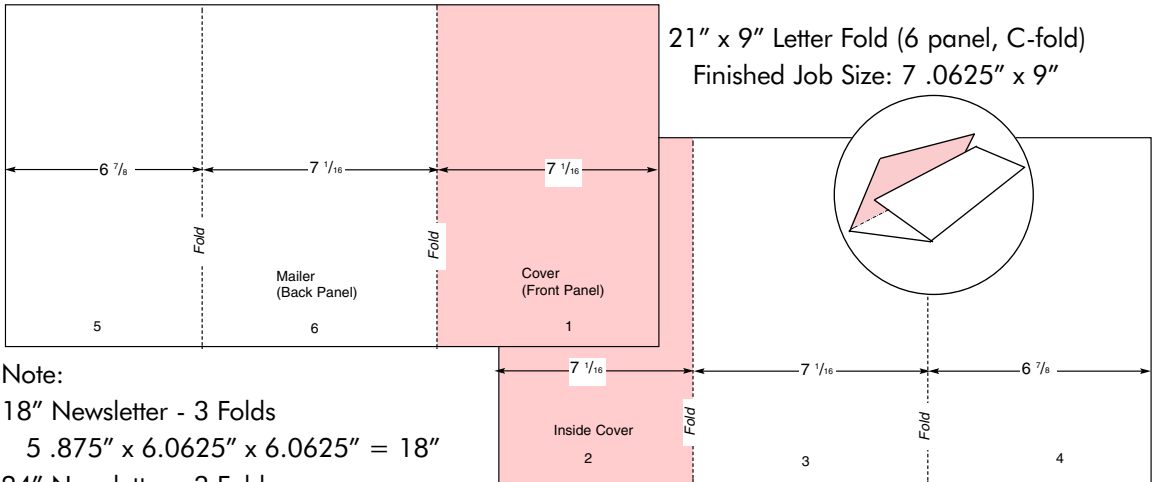


## FOLDS & DIMENSIONS

11" x 17" Half and Half Fold (2 right angle folds)



## FOLDS & DIMENSIONS



Note:

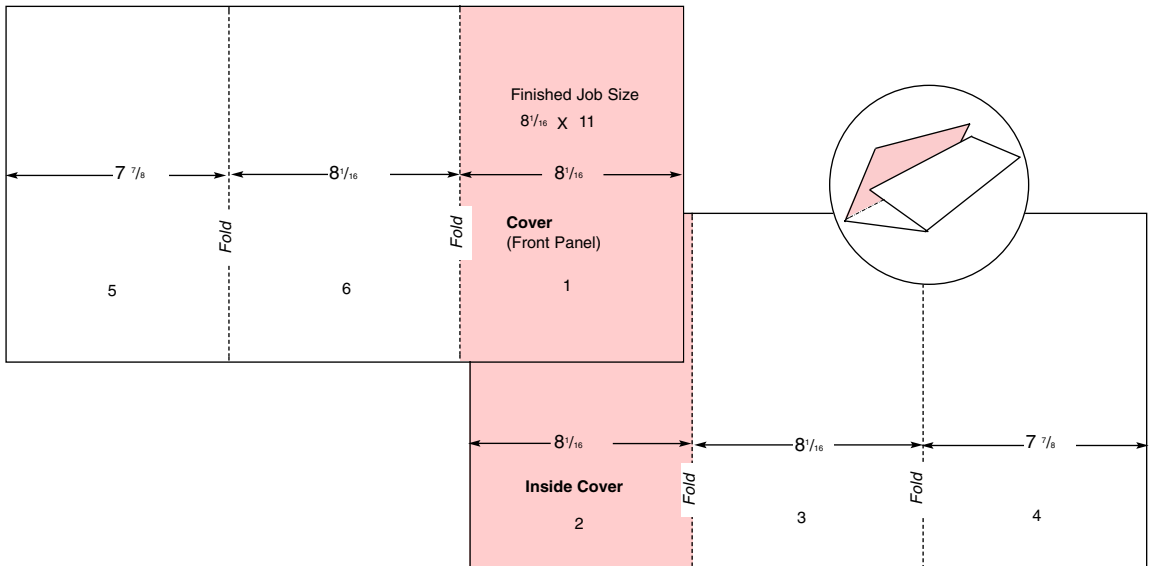
18" Newsletter - 3 Folds

$$5.875" \times 6.0625" \times 6.0625" = 18"$$

24" Newsletter - 3 Folds

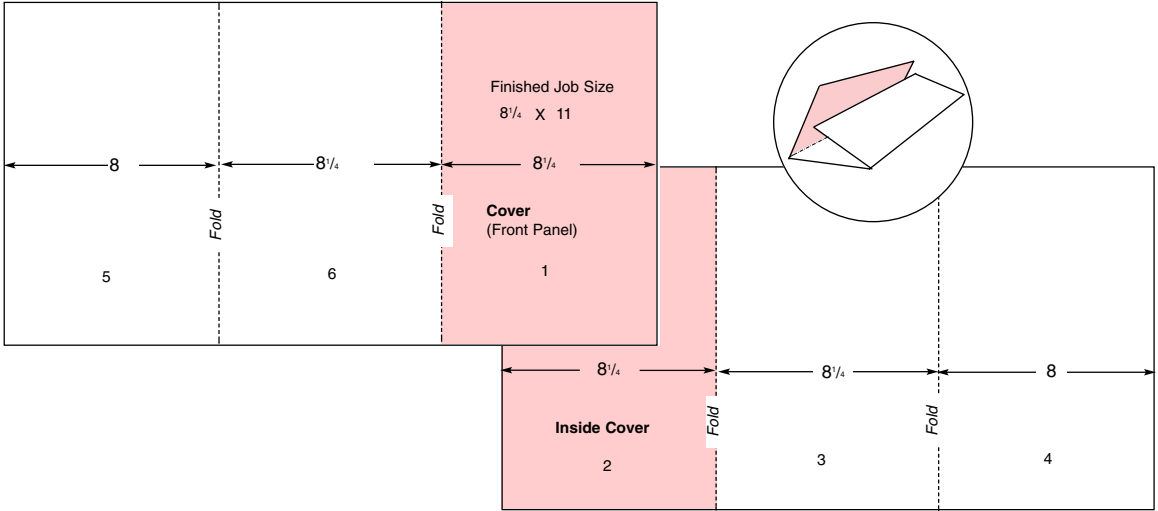
$$7.875" \times 8.0625" \times 8.0625" = 24"$$

24" Letter Fold ( 6 panel, C-fold, with bleeds)



## FOLDS & DIMENSIONS

24.5" x 11" Letter Fold (6 panel, C-fold)



25" x 11" Letter Fold (6 panel, C-fold)

