


## **MEMORANDUM**

**TO:** The Honorable JB Pritzker, Governor  
The Honorable Tony McCombie, House Minority Leader  
The Honorable Don Harmon, Senate President  
The Honorable John Curran, Senate Minority Leader  
The Honorable Emanuel “Chris” Welch, Speaker of the House

**FROM:** Dr. Tony Sanders   
State Superintendent of Education

**DATE:** January 12, 2024

**SUBJECT:** Preschool for All Biennial Report: Fiscal Years 2018 and 2019

Pursuant to Section 2-3.71 (a)(6) of the School Code [105 ILCS 5/2-3.71 (a)(6)], the Illinois State Board of Education respectfully submits the *Preschool for All Biennial Report: Fiscal Years 2018 and 2019* to the governor and the General Assembly. This report considers the characteristics of the children, parents, and families served; types of services delivered; and program models used by funded projects to address the needs of those receiving services. It also provides information on location of Preschool for All program sites.

Internal controls have been implemented to ensure the timely submission of future statutorily required reports.

This report is transmitted on behalf of the State Superintendent of Education. For additional copies of this report or for more specific information, please contact Dana Stoerger, Executive Director, Legislative Affairs at (217) 782-6510 or [dstoerge@isbe.net](mailto:dstoerge@isbe.net).

**cc:** Secretary of the Senate  
Clerk of the House  
Legislative Research Unit  
State Government Report Center



# Illinois State Board of Education

## Preschool for All Biennial Report Fiscal Years 2018 and 2019

Illinois State Board of Education  
Department of Early Childhood  
July 2020

Early Childhood Block  
Grant Program for  
Children Ages 3 to 5

Darren Reisberg  
Chairman

Carmen I. Ayala, Ph.D.  
State Superintendent

# Table of Contents

---

- Table of Contents.....1**
- Table of Tables and Figures .....2**
  - Tables ..... 2
  - Figures..... 2
- Foreword.....3**
- Program Background.....4**
- Executive Summary.....5**
  - Data Highlights ..... 5
- Discussion of Data.....6**
  - Data Limitations ..... 6
  - Sources ..... 6
- Data Tables.....7**
  - Demographics ..... 7
  - Program Funding..... 8
  - Program Evaluation..... 8
  - Geographical Need for Services ..... 8
  - Geographical Need – Poverty ..... 9
  - Geographical Need – Education..... 10
  - Cohort PARCC/IAR Performance ..... 11
  - Budget, Expenditures, and Service Levels..... 12
- Additional Resources .....43**
  - Quality Recognition and Improvement System ..... 43
  - Links ..... 44
- References.....45**

# Table of Tables and Figures

---

## Tables

TABLE 1 - NUMBER AND PERCENTAGE OF PARTICIPATING CHILDREN BY RACE/ETHNICITY ..... 7

TABLE 2 - NUMBER AND PERCENTAGE OF PARTICIPATING CHILDREN BY GENDER ..... 7

TABLE 3 - NUMBER AND PERCENTAGE OF PARTICIPATING CHILDREN BY VARIOUS RISK INDICATORS ..... 7

TABLE 4 - PROGRAM LEVEL DATA FOR DOWNSTATE (EXCLUDES CPS) AND STATEWIDE (INCLUDES CPS) PFA PROGRAMS..... 8

TABLE 5 - EXCELERATE ILLINOIS QRIS AWARDS GRANTED IN FY 2018 AND FY 2019 ..... 8

TABLE 6 - BUDGET, EXPENDITURES AND SERVICE LEVELS BY PROGRAM IN FY 2018 AND FY 2019 ..... 12

TABLE 7 - BUDGET, EXPENDITURE, AND SERVICE LEVEL TOTALS FOR ALL PROGRAMS IN FY 2018 AND FY 2019 ..... 42

## Figures

FIGURE 1 - NUMBER OF PARTICIPATING CHILDREN SERVED IN FY 2018 AND FY 2019 SPLIT BY CPS AND DOWNSTATE..... 5

FIGURE 3 - CIRCLE OF QUALITY AWARD PERCENTAGE OF ALL PROGRAMS EVALUATED IN FY 2018 AND FY 2019 ..... 5

FIGURE 2 - DEMOGRAPHIC TRAITS AND RISK INDICATOR PERCENTAGES IN FY 2018 AND FY 2019..... 5

FIGURE 4 - COUNT OF CHILDREN AT OR BELOW 100% FPL BY COUNTY WITH FY 2019 PFA SITES ..... 9

FIGURE 5 - COUNT OF PARENTS OF 0-5 AGE CHILDREN WITH LESS THAN HIGH SCHOOL EDUCATION OR EQUIVALENT BY PUMA/COUNTY GROUP WITH FY 2019 PFA SITES..... 10

FIGURE 6 - COUNT (TOP) AND PERCENTAGE (BOTTOM) OF PARCC ACHIEVEMENT RESULTS FOR CHILDREN PREVIOUSLY ENROLLED IN A PFA PROGRAM..... 11

# Foreword

---

This Preschool for All (PFA) Biennial Report for fiscal years 2018 and 2019 intends to fulfill the requirements outlined in Section 2-3.71 (a) (6) of the Illinois School Code:

---

*“The State Board of Education shall report to the General Assembly by November 1, 2018 and every 2 years thereafter on the results and progress of students who were enrolled in preschool educational programs, including an assessment of which programs have been most successful in promoting academic excellence and alleviating academic failure. The State Board of Education shall assess the academic progress of all students who have been enrolled in preschool educational programs.”*

---

Collection of program information contained herein occurred in FY 2018 and FY 2019 from various sources as outlined in the Discussion of Data section. Analysis and commentary of these data center on the deliverables outlined in the legislation above:

1. Demographic and risk indicator characteristics of students served by entities that received funding from PFA programs
2. Program evaluation results from the ExceleRate Illinois Quality Recognition and Improvement System (QRIS) for programs evaluated during FY 2018 and FY 2019
3. Academic progress of former PFA children performance as measured by the Partnership for Assessment of Readiness for College and Career (PARCC) for 3<sup>rd</sup> graders in FY 2018 and FY 2019

For more information, please contact Carisa Hurley, Director of the Department of Early Childhood, at (217) 524-4835.

# Program Background

---

In 1985, the Illinois State Board of Education (ISBE) adopted a policy on early childhood education and was authorized by legislation to administer grants to school districts to operate prekindergarten programs for children 3 to 5 years of age. Other eligible entities have been able to receive the grant since FY 2004. The eligible population to be served in this program is defined in Section 2-3.71 (a) (4.5) of the Illinois School Code. The Preschool for All program has received funds since FY 2007.

Children who are at risk are eligible under this grant. Also, children can be eligible if the family income is less than four times the Federal Poverty Level. Children are identified for the program through individual screening and assessment, not by their membership in a given group or the characteristics of their families. Individual projects establish their own eligibility criteria and methods for screening based on local needs. ISBE requires the following to be included in screening: fine and gross motor skills, cognitive development, visual-motor integration, language and speech development, vocabulary, English proficiency, and social competence. Information on family history is also collected. Criteria such as low income, homelessness, single parenting, teen parenting, the parents' education level, drug/alcohol abuse, etc. are also used by projects to determine program eligibility. No single uniform eligibility standard or screening system is applied to all age-appropriate populations. Program eligibility is based on local needs; therefore, the characteristics and services of the programs vary according to the needs of the participants.

# Executive Summary

## Data Highlights

### Enrollment Counts

Enrollments remained nearly flat from FY 2018 to FY 2019 as shown in Figure 1. Downstate programs saw a jump of 1,500 children with a similar decrease in children served by CPS between the two fiscal years. Downstate enrollments continue a recent trend of increasing service levels over the past 4 years (54,568 in FY 2016 and 54,633 in FY 2017).

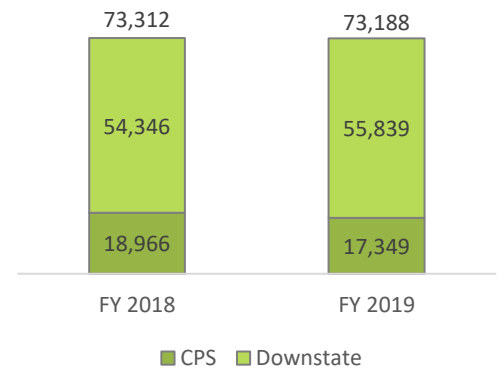


Figure 1 - Number of participating children served in FY 2018 and FY 2019 split by CPS and Downstate

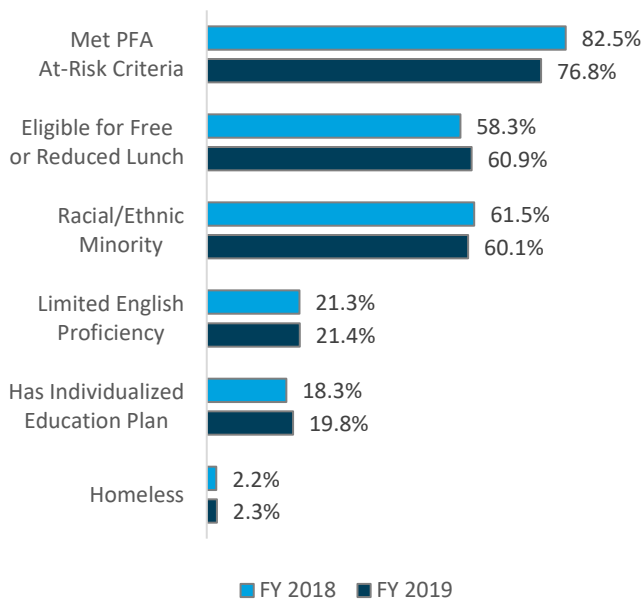


Figure 3 - Demographic traits and risk indicator percentages in FY 2018 and FY 2019

### Program Quality

Program quality remains a key focus of Early Childhood programs across the state<sup>1</sup>. Over 75% of all programs monitored in both FY 2018 and FY 2019 received the highest possible award (Gold) (ExceleRate Illinois). 98% of all programs monitored (269 in FY2018 and 185 in FY 2019) were awarded silver or higher. Figure 2 displays the mix of awards over the previous two fiscal years.

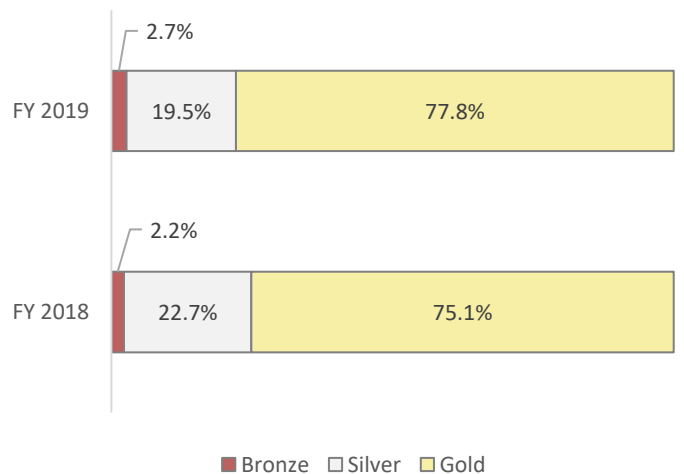


Figure 2 - Circle of Quality award percentage of all programs evaluated in FY 2018 and FY 2019

<sup>1</sup> Does not include CPS or DCFS licensed facilities. These entities provide their own monitoring and quality recognition assessment.

# Discussion of Data

---

## Data Limitations

Program data submitted through IWAS is self-reported information for each PFA program. To ensure data quality, SIS provides a comprehensive data import process that validates information uploaded into SIS follows required element guidelines including appropriate data types, field length and business logic. SIS also provides a data quality dashboard where programs can review uploaded data and identify missing elements. Finally, SIS provides programs the ability to indicate erroneous records to prevent their inclusion into final reports. A complete list of validations is maintained in the Student Information System (SIS) System Validations<sup>2</sup> document. SIS also provides a data quality dashboard where programs can identify potential issues.

## Sources

### *ISBE Web Application Security (IWAS)*

PFA programs across the state interact with ISBE through a common access point known as IWAS. IWAS allows credential provisioning and authentication for all ISBE data systems. Programs are granted access to a number of data systems ranging in function from simple data collection to end to end grant application processing. ISBE staff can communicate with programs through IWAS blasts that include reminders on due dates, changes in data collection or other data related notifications.

### *Student Information System (SIS)*

SIS is a statewide data system developed by ISBE and IBM Corp. PFA programs submit child and caregiver records with the required elements outlined in the SIS Data Elements<sup>3</sup> documentation. These data include demographic information, enrollment details and risk indicators. In addition to data collection, SIS allows programs to view descriptive reports of their data.

### *Electronic Grants Management System (eGMS)*

The eGMS provides a common and consistent grant process for education agencies as well as ISBE staff. Programs can apply, amend, and submit grant applications directly to ISBE. Data contained in eGMS include financial/budgetary information, program details, estimated enrollment counts, and directory information.

### *Illinois Early Childhood Asset Map (IECAM)*

IECAM is an early childhood access point for data, legislation and resources partially funded by ISBE. IECAM's stated goals are to provide assistance in the legislative process, to make public resource allocation transparent and to enhance access to data germane to early childhood (IECAM, n.d.). For purposes of this report, IECAM provides access to U.S. Census Bureau demographic data and risk indicator population estimates. IECAM uses Public Use Microdata Sample (PUMS) data, ISBE data, and geographic data to provide geographical context to early childhood needs and services across the state.

### *ExceleRate Illinois*

ECERS-3 evaluation and ISBE compliance checklist data for PFA program evaluations are collected by National Louis University and provided to ISBE for recognition calculation. Recognition is calculated per the definitions stipulated in the ExceleRate Illinois Circles of Quality chart (ExceleRate Illinois). ExceleRate provides access to PFA program awards through their website.

---

<sup>2</sup> See Links section for hyperlink to SIS validation documentation

<sup>3</sup> See Links for hyperlink to SIS data elements documentation



# Data Tables

The following data tables provide a demographic profile of the population being served by PFA programming, funding summary information, program quality evaluations, and budgetary/service level information. Broadly, these data are used to ensure program accountability, to ensure equity and accessibility, to confirm priority populations are being served, and to identify future needs.

## Demographics

PFA programming aims to serve children most at risk of academic failure due to several risk factors. Demographic data collected in both fiscal years confirm that an overwhelming majority of children served meet one or both of two key risk indicators – PFA at-risk criteria and free or reduced lunch eligibility (FRL). Over 80 percent served in FY 2018 and 76 percent served in FY 2019 met PFA at-risk criteria. FRL eligible children made up nearly 60 percent of those served in both fiscal years. These populations are important because research indicates these children are most at-risk of academic failure, especially when in combination (Rathbyn, West, & Walston, 2005). Tables 1, 2 and 3 provide demographic and risk indicator breakouts in counts and percentage for FY 2018 and FY 2019.

Table 1 - Number and percentage of participating children by race/ethnicity

	FY 2018		FY 2019	
	Child Count	Percent of Total	Child Count	Percent of Total
American Indian/Alaska Native	200	0.3%	208	0.3%
Asian	2,738	3.7%	2,939	4.0%
Black/African American	15,411	21.0%	15,444	21.1%
Hispanic/Latino	21,808	29.7%	21,130	28.9%
Native Hawaiian/Pacific Islander	63	0.1%	67	0.1%
Two or More	4,851	6.6%	4,168	5.7%
White	28,241	38.5%	29,232	39.9%
<b>Grand Total</b>	<b>73,312</b>	<b>100.0%</b>	<b>73,188</b>	<b>100.0%</b>

Table 2 - Number and percentage of participating children by gender

	FY 2018		FY 2019	
	Child Count	Percent of Total	Child Count	Percent of Total
Female	34,812	47.5%	34,450	47.1%
Male	38,500	52.5%	38,738	52.9%
<b>Grand Total</b>	<b>73,312</b>	<b>100.0%</b>	<b>73,188</b>	<b>100.0%</b>

Table 3 - Number and percentage of participating children by various risk indicators

	FY 2018		FY 2019	
	Child Count	Percent of Total	Child Count	Percent of Total
PFA At-Risk Criteria	60,461	82.5%	56,217	76.8%
FRL	42,737	58.3%	44,567	60.9%
LEP	15,611	21.3%	15,662	21.4%
Has IEP	13,423	18.3%	14,500	19.8%
Homeless	1,608	2.2%	1,687	2.3%
<b>Total Children</b>	<b>73,312</b>		<b>73,188</b>	

## Program Funding

Table 4 - Program level data for Downstate (excludes CPS) and Statewide (includes CPS) PFA programs

	FY 2018		FY 2019		
	Statewide	Downstate	Statewide	Downstate	
Funded Programs		453	452	423	422
Children Served		73,312	54,346	73,188	55,839
Total Funding	\$	319,232,877	\$ 196,620,777	\$ 339,343,257	\$ 188,055,038
<b>Cost per Student</b>	<b>\$</b>	<b>4,354</b>	<b>\$ 3,618</b>	<b>\$ 4,637</b>	<b>\$ 3,368</b>

## Program Evaluation

Simply serving these children is not enough. Quality service is paramount in providing them a foundation for academic and social growth. During the FY 2018 and FY 2019 evaluations, over 98 percent of programs were awarded the Gold or Silver designation. These awards give caregivers confidence that children receive high quality care and education tailored to meet their unique needs.

Table 5 - ExceleRate Illinois QRIS awards granted in FY 2018 and FY 2019

	FY 2018		FY 2019	
	Program Count	Percent of Total	Program Count	Percent of Total
Gold	202	75.1%	144	77.8%
Silver	61	22.7%	36	19.5%
Bronze	6	2.2%	5	2.7%
<b>Grand Total</b>	<b>269</b>	<b>100.0%</b>	<b>185</b>	<b>100.0%</b>

## Geographical Need for Services

Research shows that two primary factors can contribute to a child's future academic stagnation, when present at an early age: **poverty** and **limited parental education**. In addition to correlating with lower academic achievement, these factors are more likely to be present in the lives of children with multiple other risk factors (e.g, single-parent household, primary home language other than English). (Rathbyn, West, & Walston, 2005)

The next two pages include an overlay of FY 2019 PFA sites on top of poverty and education data by county/PUMA<sup>4</sup> throughout the state of Illinois. FY 2018 is the most recent data available for both poverty and education data used in the following figures.

<sup>4</sup> PUMA: Public-Use Microdata Area. PUMAs are geographic groups of states that contain at least 100,000 people.

# Geographical Need – Poverty

## Children Living at or below Federal Poverty Level by County with PFA Site Overlay

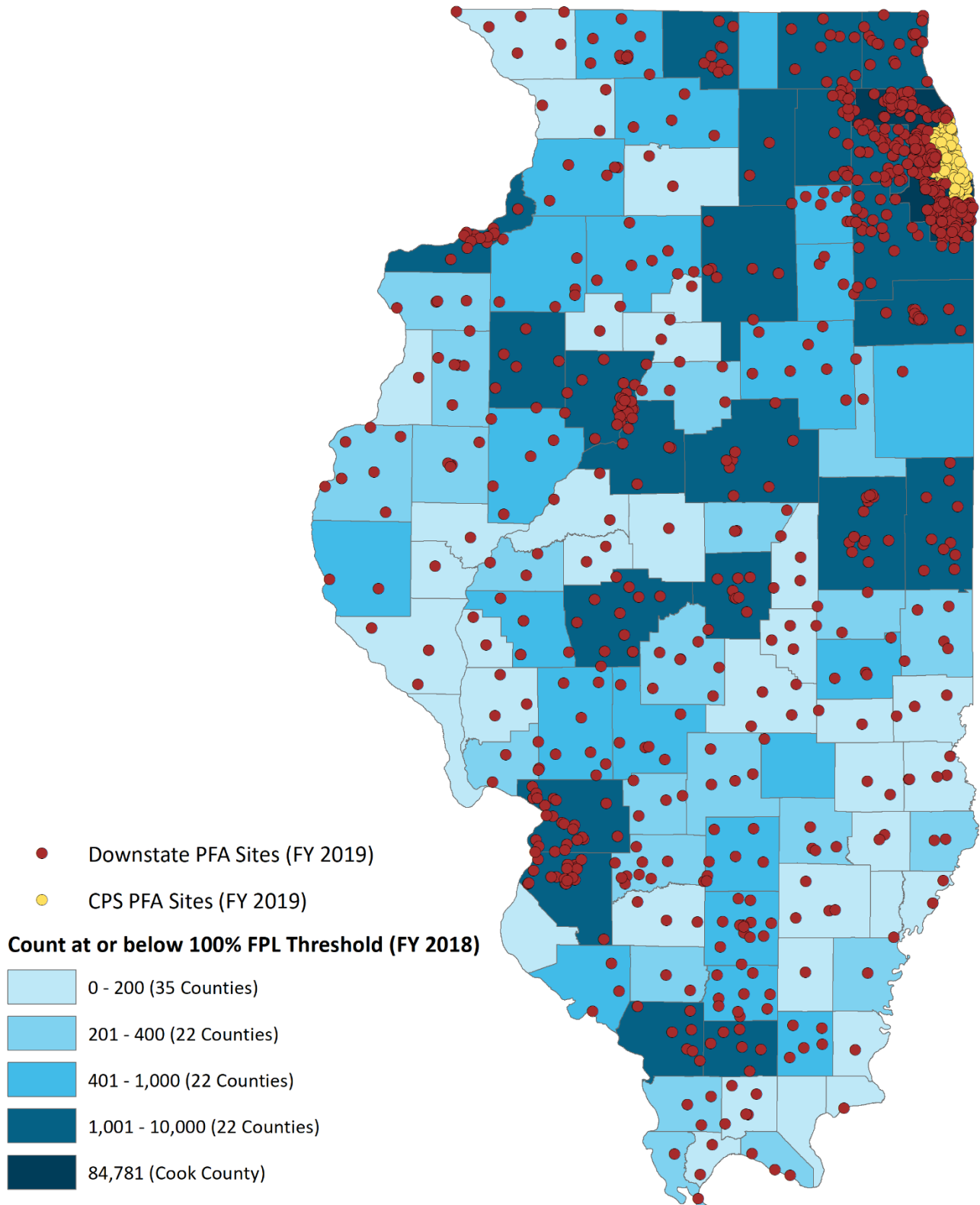


Figure 4 - Count of children at or below 100% FPL by county with FY 2019 PFA sites

## Geographical Need – Education

### Parents of 0-5 Age Children with less than a High School Education or Equivalent by PUMA/County Group with PFA Site Overlay

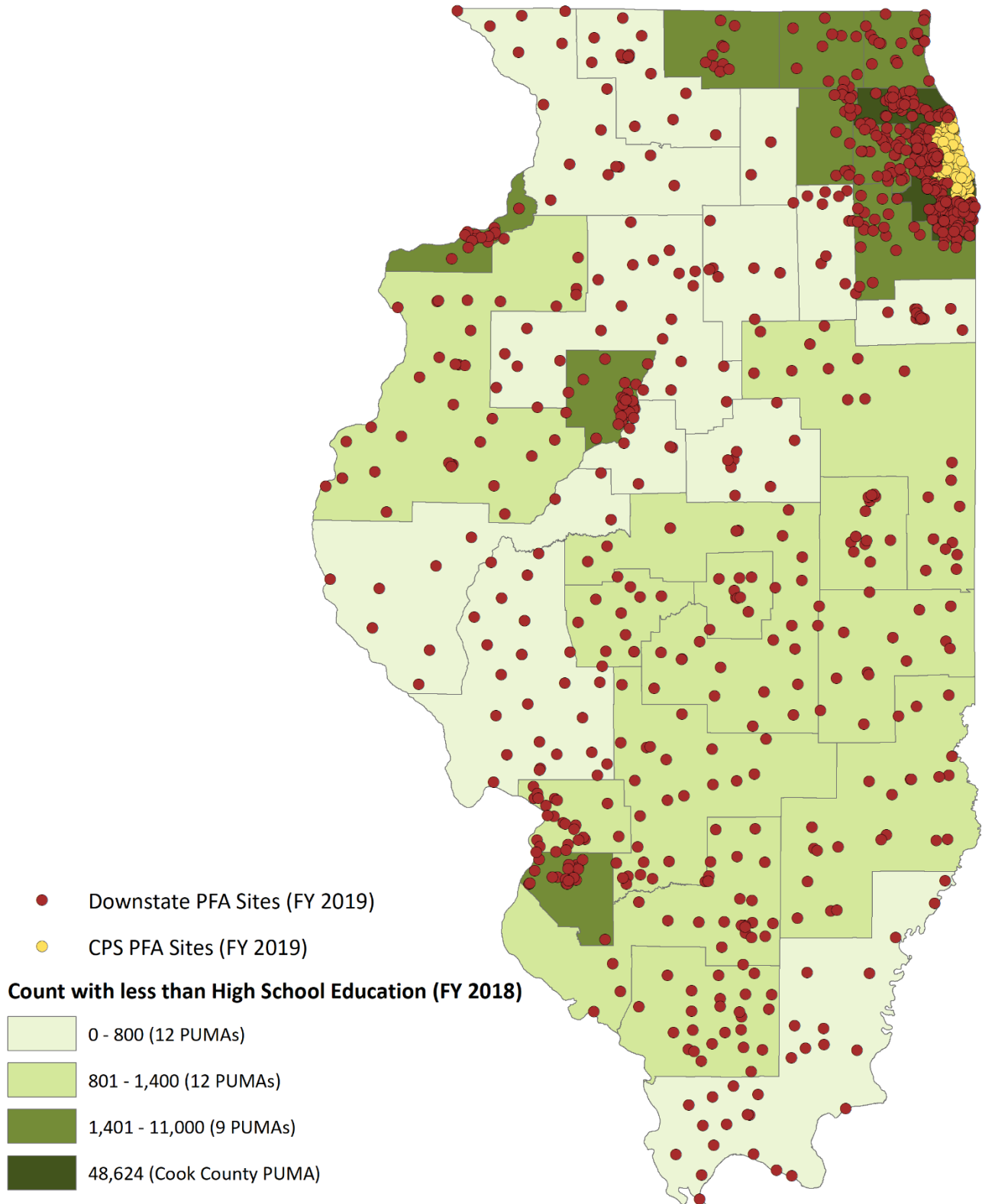


Figure 5 - Count of parents of 0-5 age children with less than high school education or equivalent by PUMA/county group with FY 2019 PFA sites

## Cohort PARCC/IAR Performance

Early Childhood programming provides at-risk children much needed educational services to provide a foundation for future academic success. One way to gauge the impact is to look at assessment performance of children who previously received Early Childhood services. In FY 2019, the Partnership for Assessment of Readiness for College and Career (PARCC) assessment was replaced by the Illinois Assessment of Readiness (IAR). Both assessments are virtually identical and are synonymous for purposes of the following analysis. These assessments are administered starting in the third grade, typically the fourth school year after a child leaves pre-k age.

Restrictions have been placed on these data to ensure a consistent data set. For purposes of this report, cohorts are populated based on the last year a child was enrolled in a PFA program and the first year they received the PARCC/IAR assessment as a third grader. PARCC/IAR data with missing or incomplete scores across mathematics (Math) and English language arts (ELA) subjects are excluded.

To help illustrate how a cohort is populated in this report, suppose a child was enrolled in a PFA program in 2014. This child moves on to kindergarten and finally in 2018 is enrolled in a third grade classroom. The child receives the PARCC assessment for the first time. This child would be placed in the 2014 Cohort. Any further results (e.g. in 2019 as a fourth grader) are excluded from this data set for this child.

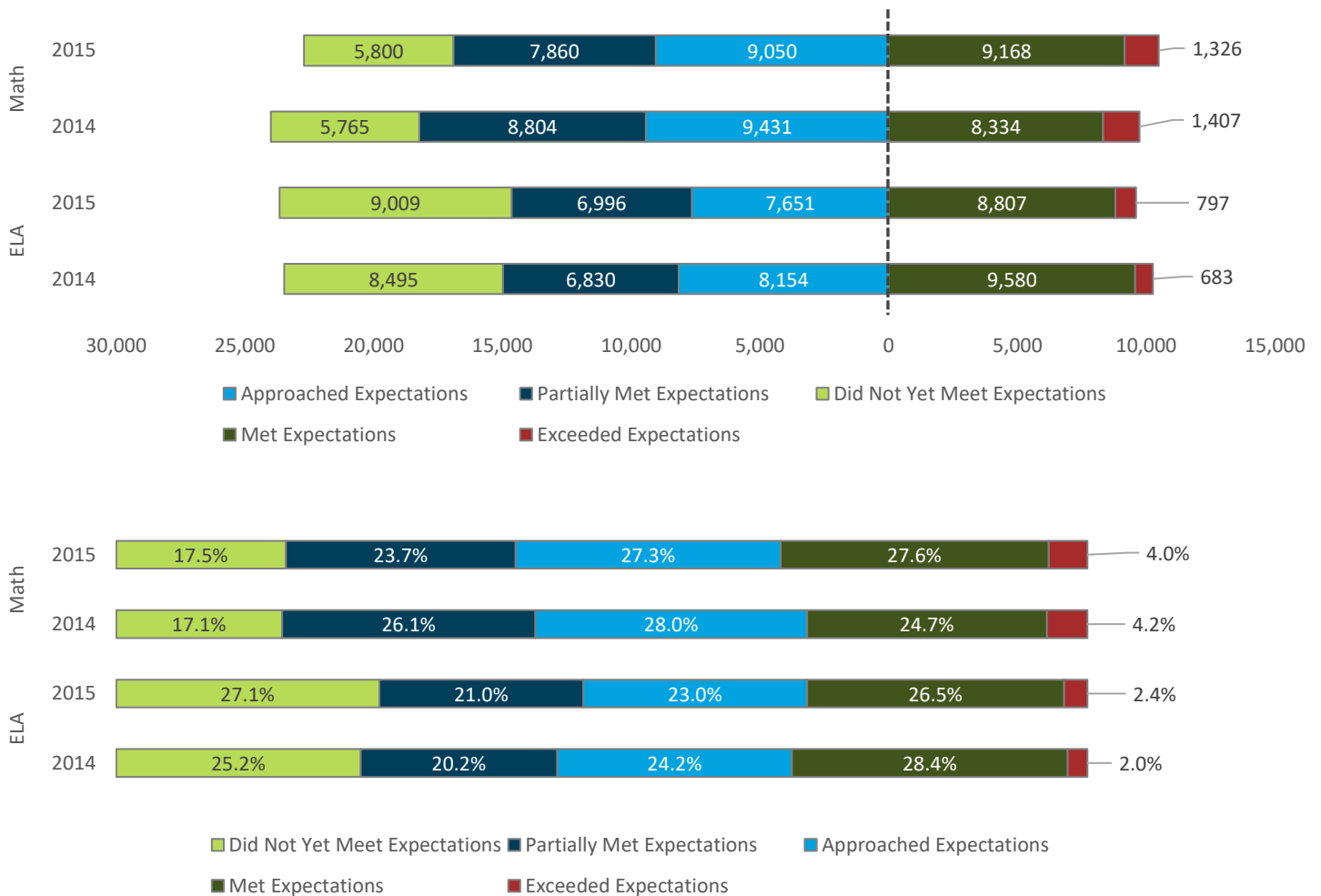


Figure 6 - Count (top) and percentage (bottom) of PARCC achievement results for children previously enrolled in a PFA program

## Budget, Expenditures, and Service Levels

The following table contains data used by ISBE to identify programs meeting the budgetary requirements for receiving PFA funding. Service levels are the most important expression of how programs use PFA funds. Comparing the “To Be Served” total with the “Actually Served” total is a simple way to identify programs using PFA funds effectively.

Table 6 - Budget, Expenditures and Service Levels by program in FY 2018 and FY 2019

	Total Budget (\$)	Total Expenditures (\$)	Administrative Expenditures (\$)	Children To Be Served (#)	Children Actually Served (#)
<b>01001001026 - Payson CUSD 1</b>					
FY 2018	\$181,600	\$181,599	\$4,750	40	39
FY 2019	\$130,681	\$129,045	\$13,383	40	37
<b>01001002026 - Liberty CUSD 2</b>					
FY 2018	\$126,600	\$126,600	\$6,383	40	40
FY 2019	\$261,362	\$259,193	\$18,175	80	74
<b>01001172022 - Quincy SD 172</b>					
FY 2018	\$740,391	\$740,391	\$54,097	190	192
FY 2019	\$649,330	\$649,330	\$51,749	190	189
<b>01005001026 - Brown County CUSD 1</b>					
FY 2018	\$283,937	\$283,937	\$0	80	81
FY 2019	\$298,099	\$298,099	\$3,000	80	89
<b>01009015026 - Beardstown CUSD 15</b>					
FY 2018	\$398,103	\$384,938	\$19,087	160	183
FY 2019	\$471,322	\$467,295	\$22,256	180	183
<b>01009064026 - Virginia CUSD 64</b>					
FY 2018	\$122,691	\$121,782	\$0	40	39
FY 2019	\$123,772	\$123,772	\$0	40	42
<b>01009262026 - A-C Central CUSD 262</b>					
FY 2018	\$227,335	\$212,934	\$320	40	36
FY 2019	\$123,771	\$122,703	\$625	40	41
<b>01069006026 - Waverly CUSD 6</b>					
FY 2018	\$110,810	\$110,454	\$0	20	8
FY 2019	\$97,073	\$96,718	\$0	26	33
<b>01069011026 - Meredosia-Chambersburg CUSD 11</b>					
FY 2018	\$77,250	\$77,250	\$4,000	20	24
<b>01069027026 - Triopia CUSD 27</b>					
FY 2018	\$99,024	\$99,024	\$6,148	40	41
FY 2019	\$104,905	\$104,905	\$6,216	40	22
<b>01069117022 - Jacksonville SD 117</b>					
FY 2018	\$1,150,299	\$1,110,949	\$102,166	180	190
FY 2019	\$1,097,940	\$1,094,968	\$70,852	200	185
<b>01075003026 - Pleasant Hill CUSD 3</b>					
FY 2018	\$83,687	\$79,746	\$0	40	36
FY 2019	\$86,940	\$86,940	\$0	40	17
<b>01075004026 - Griggsville-Perry CUSD 4</b>					
FY 2018	\$153,385	\$152,965	\$1,990	40	2
<b>01075010026 - Pikeland CUSD 10</b>					
FY 2018	\$281,663	\$280,915	\$0	77	78
FY 2019	\$308,947	\$308,817	\$0	80	85

	Total Budget (\$)	Total Expenditures (\$)	Administrative Expenditures (\$)	Children To Be Served (#)	Children Actually Served (#)
<b>01075012026 - Western CUSD 12</b>					
FY 2018	\$350,200	\$348,157	\$9,012	100	89
FY 2019	\$299,961	\$299,961	\$6,431	80	87
<b>01086001026 - Winchester CUSD 1</b>					
FY 2018	\$262,200	\$262,200	\$4,180	80	42
FY 2019	\$134,910	\$134,910	\$4,000	60	58
<b>01086002026 - Scott-Morgan CUSD 2</b>					
FY 2019	\$69,900	\$69,691	\$0	20	17
<b>03003002026 - Bond County CUSD 2</b>					
FY 2018	\$705,746	\$648,179	\$26,573	115	135
FY 2019	\$824,740	\$699,660	\$26,031	140	151
<b>03011001026 - Morrisonville CUSD 1</b>					
FY 2018	\$115,146	\$115,146	\$10,392	40	37
FY 2019	\$122,227	\$122,227	\$5,195	40	21
<b>03011003026 - Taylorville CUSD 3</b>					
FY 2018	\$786,132	\$784,644	\$36,026	270	279
FY 2019	\$783,963	\$783,963	\$29,702	260	256
<b>03011004026 - Edinburg CUSD 4</b>					
FY 2018	\$103,000	\$88,020	\$1,706	30	30
<b>03011014024 - South Fork SD 14</b>					
FY 2018	\$104,042	\$104,042	\$9,445	40	40
FY 2019	\$104,042	\$104,042	\$4,645	40	35
<b>03026201026 - Brownstown CUSD 201</b>					
FY 2018	\$850,283	\$850,283	\$36,226	150	181
FY 2019	\$805,360	\$805,360	\$44,898	260	274
<b>03068002026 - Panhandle CUSD 2</b>					
FY 2018	\$123,600	\$123,600	\$0	40	45
FY 2019	\$130,681	\$130,681	\$0	40	44
<b>03068003026 - Hillsboro CUSD 3</b>					
FY 2018	\$806,144	\$806,144	\$34,619	180	190
FY 2019	\$731,507	\$731,507	\$37,011	180	190
<b>03068012026 - Litchfield CUSD 12</b>					
FY 2018	\$345,988	\$345,988	\$32,480	120	127
FY 2019	\$362,230	\$362,230	\$23,229	120	120
<b>03068022026 - Nokomis CUSD 22</b>					
FY 2018	\$195,400	\$193,785	\$650	80	74
FY 2019	\$205,201	\$204,629	\$500	80	74
<b>04004200026 - North Boone CUSD 200</b>					
FY 2018	\$132,600	\$127,489	\$0	40	41
<b>04101122022 - Harlem UD 122</b>					
FY 2018	\$123,600	\$114,626	\$26	40	42
FY 2019	\$1,176,127	\$1,069,143	\$7,991	360	343
<b>04101131004 - Kinnikinnick CCSD 131</b>					
FY 2019	\$137,820	\$74,529	\$0	40	31

	Total Budget (\$)	Total Expenditures (\$)	Administrative Expenditures (\$)	Children To Be Served (#)	Children Actually Served (#)
<b>04101140004 - Rockton SD 140</b>					
FY 2018	\$142,726	\$139,184	\$0	40	40
FY 2019	\$133,501	\$133,501	\$0	40	42
<b>04101205025 - Rockford SD 205</b>					
FY 2018	\$9,340,009	\$9,160,706	\$328,376	2096	2576
FY 2019	\$9,004,021	\$8,922,438	\$264,708	1960	2685
<b>04101320026 - County of Winnebago SD 320</b>					
FY 2018	\$257,200	\$248,229	\$3,500	80	88
<b>05016021004 - Wheeling CCSD 21</b>					
FY 2019	\$1,151,203	\$1,124,828	\$0	320	344
<b>05016054004 - Schaumburg CCSD 54</b>					
FY 2018	\$3,430,337	\$3,430,337	\$0	560	664
FY 2019	\$1,916,385	\$1,916,385	\$0	560	669
<b>05016059004 - Comm Cons SD 59</b>					
FY 2018	\$766,671	\$766,671	\$0	160	90
FY 2019	\$504,240	\$504,240	\$0	150	171
<b>05016062004 - CCSD 62</b>					
FY 2018	\$873,000	\$873,000	\$0	200	194
FY 2019	\$796,767	\$796,767	\$0	240	246
<b>05016063002 - East Maine SD 63</b>					
FY 2018	\$487,271	\$487,198	\$0	250	206
FY 2019	\$408,119	\$408,119	\$0	200	279
<b>05016065004 - Evanston CCSD 65</b>					
FY 2018	\$1,069,786	\$1,045,834	\$55,574	160	192
FY 2019	\$744,709	\$744,709	\$59,143	160	205
<b>05016069002 - Skokie SD 69</b>					
FY 2018	\$247,986	\$247,748	\$20,643	80	89
FY 2019	\$501,295	\$501,295	\$21,263	160	158
<b>05016071002 - Niles ESD 71</b>					
FY 2019	\$141,081	\$141,081	\$0	40	40
<b>05016073502 - Skokie SD 73-5</b>					
FY 2018	\$66,985	\$66,861	\$0	20	20
<b>05016086P00 - Kids USA Ltd</b>					
FY 2019	\$60,000	\$60,000	\$5,000	20	24
<b>05016188X01 - Mosaic Early Childhood Ctr Inc</b>					
FY 2018	\$195,400	\$182,240	\$6,100	60	0
FY 2019	\$261,362	\$261,362	\$18,616	80	80
<b>05016269P00 - Childcare Network of Evanston</b>					
FY 2018	\$247,200	\$247,200	\$15,101	78	92
FY 2019	\$401,093	\$401,093	\$23,629	118	146
<b>05016782P00 - Puerta Abierta Preschool</b>					
FY 2018	\$124,733	\$124,733	\$5,500	40	44
<b>06016079002 - Pennoyer SD 79</b>					
FY 2019	\$143,901	\$143,901	\$0	40	45



	Total Budget (\$)	Total Expenditures (\$)	Administrative Expenditures (\$)	Children To Be Served (#)	Children Actually Served (#)
<b>06016081002 - Schiller Park SD 81</b>					
FY 2018	\$416,840	\$401,857	\$0	160	164
FY 2019	\$437,463	\$432,231	\$0	160	142
<b>06016083002 - Mannheim SD 83</b>					
FY 2018	\$517,837	\$517,837	\$0	205	155
FY 2019	\$530,473	\$530,473	\$0	205	202
<b>06016084002 - Franklin Park SD 84</b>					
FY 2018	\$125,072	\$125,072	\$0	40	47
FY 2019	\$267,001	\$267,001	\$0	80	95
<b>06016084502 - Rhodes SD 84-5</b>					
FY 2018	\$174,780	\$174,780	\$0	40	48
FY 2019	\$139,681	\$139,681	\$0	40	45
<b>06016086002 - Union Ridge SD 86</b>					
FY 2018	\$263,261	\$263,261	\$0	80	82
FY 2019	\$261,362	\$261,362	\$0	80	81
<b>06016087002 - Berkeley SD 87</b>					
FY 2018	\$291,112	\$291,112	\$13,000	80	62
<b>06016088002 - Bellwood SD 88</b>					
FY 2018	\$918,841	\$918,841	\$81,314	280	274
FY 2019	\$914,766	\$900,700	\$90,947	280	279
<b>06016089002 - Maywood-Melrose Park-Broadview 89</b>					
FY 2018	\$564,618	\$564,618	\$49,516	140	155
FY 2019	\$1,780,055	\$1,764,230	\$97,080	480	406
<b>06016092002 - Lindop SD 92</b>					
FY 2018	\$154,835	\$128,209	\$0	40	42
FY 2019	\$125,086	\$125,086	\$0	40	47
<b>06016097002 - Oak Park ESD 97</b>					
FY 2018	\$370,800	\$370,800	\$0	120	125
FY 2019	\$261,362	\$261,362	\$0	80	99
<b>06016098002 - Berwyn North SD 98</b>					
FY 2018	\$123,600	\$117,854	\$0	40	42
FY 2019	\$392,042	\$325,306	\$0	120	125
<b>06016099002 - Cicero SD 99</b>					
FY 2018	\$1,626,132	\$1,625,789	\$3,708	554	615
FY 2019	\$1,927,789	\$1,927,789	\$1,945	650	622
<b>06016100002 - Berwyn South SD 100</b>					
FY 2018	\$536,728	\$536,728	\$0	140	141
FY 2019	\$650,730	\$650,730	\$7,950	200	193
<b>06016102002 - La Grange SD 102</b>					
FY 2018	\$74,200	\$59,573	\$2,847	23	24
<b>06016103002 - Lyons SD 103</b>					
FY 2018	\$362,320	\$362,320	\$0	200	155
FY 2019	\$387,343	\$387,343	\$0	200	192
<b>06016105002 - La Grange SD 105 South</b>					
FY 2018	\$177,600	\$169,038	\$0	40	41
FY 2019	\$130,681	\$130,681	\$0	40	43

	Total Budget (\$)	Total Expenditures (\$)	Administrative Expenditures (\$)	Children To Be Served (#)	Children Actually Served (#)
<b>06016204061 - Lagrange Area Dept Spec Ed-Ladse</b>					
FY 2018	\$554,783	\$554,782	\$0	239	176
FY 2019	\$590,064	\$589,983	\$0	328	327
<b>06016228P00 - Childrens Cntr Cicero-Berwyn</b>					
FY 2018	\$384,022	\$325,449	\$29,464	100	120
FY 2019	\$349,671	\$344,671	\$30,259	100	117
<b>06016400P00 - Oak Park &amp; River Forest Day Nurs</b>					
FY 2018	\$142,371	\$142,371	\$8,997	40	39
FY 2019	\$119,621	\$119,621	\$9,641	40	42
<b>06016401026 - Elmwood Park CUSD 401</b>					
FY 2018	\$125,588	\$125,047	\$0	40	49
FY 2019	\$132,669	\$128,261	\$0	40	42
<b>06016527051 - Morton College District 527</b>					
FY 2018	\$195,400	\$195,400	\$2,900	60	61
FY 2019	\$261,362	\$261,362	\$0	80	78
<b>06016994P00 - ABC Toon Town II Educational Ctr</b>					
FY 2018	\$116,240	\$116,240	\$2,520	40	39
FY 2019	\$59,160	\$59,160	\$0	20	19
<b>07016104002 - Summit SD 104</b>					
FY 2018	\$521,400	\$500,131	\$0	150	163
FY 2019	\$625,144	\$625,144	\$0	180	191
<b>07016109002 - Indian Springs SD 109</b>					
FY 2018	\$370,800	\$370,800	\$602	120	127
FY 2019	\$570,000	\$568,786	\$560	190	198
<b>07016110002 - Central Stickney SD 110</b>					
FY 2018	\$112,464	\$112,464	\$0	35	28
FY 2019	\$115,000	\$115,000	\$0	40	24
<b>07016113A02 - Lemont-Bromberek CSD 113A</b>					
FY 2019	\$105,572	\$105,572	\$0	40	42
<b>07016117002 - North Palos SD 117</b>					
FY 2018	\$763,823	\$756,748	\$0	240	250
FY 2019	\$785,812	\$741,120	\$0	240	256
<b>07016122002 - Ridgeland SD 122</b>					
FY 2018	\$636,219	\$636,219	\$48,173	246	241
FY 2019	\$640,033	\$640,033	\$31,947	238	260
<b>07016123002 - Oak Lawn-Hometown SD 123</b>					
FY 2018	\$185,400	\$182,453	\$9,400	136	145
<b>07016124002 - Evergreen Park ESD 124</b>					
FY 2018	\$153,956	\$153,955	\$88	60	62
FY 2019	\$158,185	\$158,185	\$136	60	62
<b>07016125002 - Atwood Heights SD 125</b>					
FY 2018	\$259,001	\$259,001	\$0	40	48
FY 2019	\$174,102	\$145,570	\$0	55	57
<b>07016126002 - Alsip-Hazlgrn-Oaklwn SD 126</b>					
FY 2018	\$113,300	\$111,108	\$0	60	52
FY 2019	\$127,884	\$122,936	\$0	75	75

	Total Budget (\$)	Total Expenditures (\$)	Administrative Expenditures (\$)	Children To Be Served (#)	Children Actually Served (#)
<b>07016127002 - Worth SD 127</b>					
FY 2018	\$123,600	\$112,374	\$0	40	49
<b>07016127502 - Chicago Ridge SD 127-5</b>					
FY 2018	\$370,800	\$356,089	\$5,374	120	128
FY 2019	\$503,121	\$500,204	\$7,037	154	180
<b>07016130002 - Cook County SD 130</b>					
FY 2018	\$1,493,126	\$1,493,126	\$47,926	400	453
FY 2019	\$1,563,934	\$1,559,014	\$31,161	400	406
<b>07016133002 - Gen George Patton SD 133</b>					
FY 2018	\$259,934	\$258,158	\$13,286	60	58
FY 2019	\$250,555	\$250,555	\$13,694	60	60
<b>07016142002 - Forest Ridge SD 142</b>					
FY 2018	\$282,018	\$282,018	\$0	110	109
FY 2019	\$274,244	\$274,244	\$0	110	111
<b>07016143002 - Midlothian SD 143</b>					
FY 2018	\$434,405	\$434,405	\$21,459	120	130
FY 2019	\$455,647	\$455,647	\$2,500	120	142
<b>07016143502 - Posen-Robbins ESD 143-5</b>					
FY 2018	\$783,006	\$783,006	\$22,842	160	116
FY 2019	\$622,849	\$622,849	\$23,905	160	105
<b>07016144002 - Prairie-Hills ESD 144</b>					
FY 2018	\$299,200	\$299,200	\$0	40	213
FY 2019	\$508,562	\$508,562	\$0	80	201
<b>07016145002 - Arbor Park SD 145</b>					
FY 2018	\$250,805	\$224,439	\$10,770	85	89
FY 2019	\$250,213	\$186,214	\$11,067	85	94
<b>07016146004 - CCSD 146</b>					
FY 2018	\$434,100	\$414,343	\$8,291	140	150
FY 2019	\$499,586	\$489,836	\$9,912	150	138
<b>07016147002 - W Harvey-Dixmoor PSD 147</b>					
FY 2018	\$511,783	\$442,275	\$0	100	1
FY 2019	\$635,382	\$635,382	\$0	120	88
<b>07016148002 - Dolton SD 148</b>					
FY 2018	\$343,080	\$231,701	\$0	40	45
FY 2019	\$889,983	\$452,284	\$0	140	94
<b>07016149002 - Dolton SD 149</b>					
FY 2018	\$1,280,570	\$1,229,167	\$0	100	123
FY 2019	\$671,527	\$671,527	\$0	100	107
<b>07016150002 - South Holland SD 150</b>					
FY 2018	\$123,600	\$113,106	\$0	40	45
<b>07016151002 - South Holland SD 151</b>					
FY 2018	\$308,975	\$296,117	\$0	160	27
FY 2019	\$337,298	\$311,885	\$0	160	146
<b>07016152002 - Harvey SD 152</b>					
FY 2018	\$921,697	\$921,697	\$77,076	180	188
FY 2019	\$253,907	\$253,907	\$0	80	145

	Total Budget (\$)	Total Expenditures (\$)	Administrative Expenditures (\$)	Children To Be Served (#)	Children Actually Served (#)
<b>07016152502 - Hazel Crest SD 152-5</b>					
FY 2018	\$390,800	\$390,800	\$0	80	96
FY 2019	\$384,962	\$375,203	\$0	80	79
<b>07016153002 - Homewood SD 153</b>					
FY 2018	\$227,233	\$210,866	\$17,524	78	64
FY 2019	\$223,936	\$222,056	\$14,654	75	89
<b>07016154502 - Burnham SD 154-5</b>					
FY 2018	\$105,135	\$99,739	\$2,539	20	20
FY 2019	\$105,135	\$98,703	\$3,100	20	22
<b>07016155002 - Calumet City SD 155</b>					
FY 2018	\$451,111	\$448,401	\$28,576	120	124
FY 2019	\$472,353	\$468,586	\$29,479	120	105
<b>07016156002 - Lincoln ESD 156</b>					
FY 2018	\$582,420	\$338,121	\$0	80	90
FY 2019	\$371,582	\$350,378	\$0	80	79
<b>07016157002 - Hoover-Schrum Memorial SD 157</b>					
FY 2018	\$115,866	\$115,607	\$0	40	57
FY 2019	\$122,947	\$122,947	\$0	40	17
<b>07016158002 - Lansing SD 158</b>					
FY 2018	\$193,788	\$193,788	\$5,500	40	48
FY 2019	\$285,377	\$279,087	\$190	80	83
<b>07016159002 - ESD 159</b>					
FY 2018	\$820,796	\$819,107	\$683	144	122
FY 2019	\$455,239	\$423,645	\$4,901	123	137
<b>07016160002 - Country Club Hills SD 160</b>					
FY 2018	\$163,600	\$163,153	\$0	55	24
FY 2019	\$145,458	\$126,652	\$0	60	54
<b>07016161002 - Flossmoor SD 161</b>					
FY 2018	\$131,545	\$125,692	\$0	40	42
FY 2019	\$225,181	\$218,763	\$0	108	64
<b>07016162002 - Matteson ESD 162</b>					
FY 2018	\$712,529	\$712,529	\$0	100	107
FY 2019	\$395,551	\$395,551	\$0	100	108
<b>07016163002 - Park Forest SD 163</b>					
FY 2018	\$808,942	\$804,550	\$13,125	160	184
FY 2019	\$732,607	\$732,607	\$0	140	173
<b>07016167002 - Brookwood SD 167</b>					
FY 2018	\$262,200	\$262,200	\$0	80	70
FY 2019	\$261,362	\$259,863	\$0	80	75
<b>07016168004 - CCSD 168</b>					
FY 2018	\$474,030	\$474,030	\$17,863	115	138
FY 2019	\$329,827	\$329,827	\$0	95	119
<b>07016169002 - Ford Heights SD 169</b>					
FY 2018	\$206,057	\$205,470	\$0	40	41
FY 2019	\$296,446	\$294,997	\$0	60	66

	Total Budget (\$)	Total Expenditures (\$)	Administrative Expenditures (\$)	Children To Be Served (#)	Children Actually Served (#)
<b>07016170002 - Chicago Heights SD 170</b>					
FY 2018	\$784,044	\$784,044	\$57,874	220	239
FY 2019	\$803,772	\$803,772	\$89,168	240	243
<b>07016194002 - Steger SD 194</b>					
FY 2018	\$103,000	\$103,000	\$0	40	43
FY 2019	\$112,901	\$112,900	\$0	40	40
<b>07016214P00 - Successful Beginnings Learning</b>					
FY 2018	\$128,949	\$128,949	\$5,600	20	22
FY 2019	\$65,340	\$65,340	\$0	20	23
<b>07016241P00 - Cuddle Care Child Care Ctr Inc</b>					
FY 2019	\$143,901	\$143,901	\$0	40	28
<b>07016286P00 - Brightstart Childcare &amp; Presch</b>					
FY 2018	\$131,790	\$131,790	\$5,500	40	43
FY 2019	\$130,681	\$130,681	\$5,850	40	36
<b>07016293P00 - Sandbox Learning Center</b>					
FY 2018	\$123,600	\$123,600	\$10,160	40	38
FY 2019	\$121,877	\$121,877	\$10,160	40	40
<b>07016610P00 - M &amp; M Childcare Center Inc</b>					
FY 2018	\$153,600	\$153,600	\$9,259	40	26
FY 2019	\$123,600	\$123,600	\$6,800	40	24
<b>07016619P00 - Under Carreys Care Corporation</b>					
FY 2018	\$123,600	\$123,600	\$2,500	40	43
FY 2019	\$400,501	\$400,501	\$5,000	120	123
<b>07016768P00 - Tiny Town of Lansing Nursery Sch</b>					
FY 2018	\$157,957	\$157,957	\$3,804	40	50
FY 2019	\$130,681	\$130,681	\$8,689	40	40
<b>08000000000 - Carroll/Jo Daviess/Stephenson ROE</b>					
FY 2018	\$1,798,889	\$1,742,278	\$38,237	540	564
FY 2019	\$1,996,020	\$1,950,274	\$17,266	585	644
<b>08008314026 - West Carroll CUSD 314</b>					
FY 2018	\$703,259	\$700,852	\$14,530	160	170
FY 2019	\$725,582	\$725,582	\$11,049	160	166
<b>09010004026 - Champaign CUSD 4</b>					
FY 2018	\$1,424,250	\$1,424,250	\$93,358	240	371
FY 2019	\$1,595,478	\$1,586,660	\$91,272	360	374
<b>09010043P00 - Champaign County of</b>					
FY 2018	\$1,433,636	\$1,433,636	\$5,335	200	224
FY 2019	\$726,249	\$726,249	\$0	200	226
<b>09010116022 - Urbana SD 116</b>					
FY 2018	\$1,440,071	\$1,405,239	\$98,537	360	391
FY 2019	\$1,329,407	\$1,329,407	\$103,676	360	399
<b>09010137002 - Rantoul City SD 137</b>					
FY 2019	\$593,589	\$572,819	\$39,720	165	193
<b>09010801060 - Rural Champaign Co Spec Ed Coop</b>					
FY 2018	\$765,089	\$763,902	\$38,254	176	188
FY 2019	\$791,720	\$791,714	\$39,585	175	194

	Total Budget (\$)	Total Expenditures (\$)	Administrative Expenditures (\$)	Children To Be Served (#)	Children Actually Served (#)
<b>11012003C26 - Martinsville CUSD 3C</b>					
FY 2018	\$84,300	\$84,300	\$0	30	35
FY 2019	\$69,226	\$69,226	\$0	30	38
<b>11015002026 - Mattoon CUSD 2</b>					
FY 2018	\$426,455	\$323,830	\$10,365	102	126
FY 2019	\$428,954	\$423,842	\$21,448	120	103
<b>11015801060 - Eastern IL Area of Spec Educ</b>					
FY 2018	\$2,215,689	\$2,188,313	\$120,524	626	737
FY 2019	\$3,172,402	\$3,148,741	\$147,769	979	927
<b>11021306026 - Arcola CUSD 306</b>					
FY 2018	\$205,981	\$205,981	\$10,500	80	68
FY 2019	\$201,313	\$201,313	\$2,206	80	68
<b>11023001026 - Shiloh CUSD 1</b>					
FY 2018	\$168,403	\$168,403	\$0	40	42
FY 2019	\$167,484	\$167,484	\$0	40	34
<b>11023006026 - Edgar County CUD 6</b>					
FY 2018	\$105,060	\$103,206	\$3,219	18	21
FY 2019	\$105,060	\$100,048	\$0	20	20
<b>11023095025 - Paris-Union SD 95</b>					
FY 2018	\$185,631	\$185,631	\$1,519	80	94
FY 2019	\$176,232	\$176,232	\$1,500	80	118
<b>11087004026 - Shelbyville CUSD 4</b>					
FY 2018	\$135,701	\$135,701	\$4,556	40	58
FY 2019	\$108,955	\$108,955	\$0	50	51
<b>11087021026 - Central A &amp; M CUD 21</b>					
FY 2019	\$143,901	\$143,901	\$0	40	42
<b>12000000000 - Clay/Cwford/Jasper/Lwrnce/Rhland</b>					
FY 2018	\$618,000	\$618,000	\$30,896	180	173
FY 2019	\$659,555	\$659,555	\$32,278	180	174
<b>12013010026 - Clay City CUSD 10</b>					
FY 2018	\$78,655	\$77,412	\$0	40	43
FY 2019	\$85,736	\$85,736	\$0	40	41
<b>12013025026 - North Clay CUSD 25</b>					
FY 2018	\$123,600	\$123,600	\$0	40	40
FY 2019	\$133,501	\$133,501	\$1,400	40	42
<b>12013035026 - Flora CUSD 35</b>					
FY 2018	\$370,800	\$370,800	\$14,489	120	123
FY 2019	\$392,042	\$392,042	\$16,070	120	126
<b>12017001026 - Hutsonville CUSD 1</b>					
FY 2018	\$99,988	\$99,988	\$500	20	24
FY 2019	\$94,888	\$94,888	\$500	20	23
<b>12017002026 - Robinson CUSD 2</b>					
FY 2018	\$304,382	\$288,034	\$4,117	80	92
FY 2019	\$264,571	\$264,571	\$3,382	80	87
<b>12017003026 - Palestine CUSD 3</b>					
FY 2018	\$81,038	\$72,549	\$0	40	43

	Total Budget (\$)	Total Expenditures (\$)	Administrative Expenditures (\$)	Children To Be Served (#)	Children Actually Served (#)
<b>12017004026 - Oblong CUSD 4</b>					
FY 2018	\$74,800	\$65,364	\$0	40	42
FY 2019	\$81,881	\$81,410	\$0	40	41
<b>12017006P00 - Kids Kingdom Preschool Inc</b>					
FY 2018	\$123,600	\$123,600	\$3,400	40	45
FY 2019	\$130,681	\$130,681	\$5,464	40	35
<b>12040001026 - Jasper County CUD 1</b>					
FY 2018	\$171,997	\$170,106	\$0	40	42
FY 2019	\$126,048	\$125,177	\$0	40	42
<b>12051010026 - Red Hill CUSD 10</b>					
FY 2018	\$256,908	\$256,908	\$0	80	84
FY 2019	\$261,362	\$261,362	\$0	80	84
<b>12051020026 - Lawrence County CUD 20</b>					
FY 2018	\$262,200	\$262,110	\$0	80	88
<b>12080001026 - Richland County CUSD 1</b>					
FY 2018	\$458,537	\$458,537	\$4,285	160	180
FY 2019	\$554,556	\$554,556	\$8,148	180	192
<b>12080007p00 - Child Development Partners LLC</b>					
FY 2018	\$88,189	\$88,189	\$3,616	40	0
<b>12080008P00 - RBC Early Education LLC</b>					
FY 2018	\$41,591	\$41,591	\$2,150	40	33
FY 2019	\$112,525	\$112,525	\$5,498	20	21
<b>13000000000 - Clintn/Jeffrsn/Marin/Washngtn ROE</b>					
FY 2018	\$1,248,800	\$1,244,588	\$15,486	390	400
FY 2019	\$1,925,807	\$1,887,728	\$181,971	710	722
<b>13014003026 - Wesclin CUSD 3</b>					
FY 2018	\$180,862	\$180,862	\$6,500	60	68
FY 2019	\$184,183	\$178,595	\$600	60	68
<b>13014012004 - Breese ESD 12</b>					
FY 2018	\$120,510	\$119,449	\$8,400	40	41
FY 2019	\$181,817	\$175,479	\$12,000	57	58
<b>13014060002 - Germantown SD 60</b>					
FY 2018	\$53,105	\$53,105	\$0	20	20
FY 2019	\$51,496	\$51,193	\$0	20	20
<b>13014141502 - St Rose SD 14-15</b>					
FY 2019	\$47,419	\$34,846	\$0	20	30
<b>13041080002 - Mount Vernon SD 80</b>					
FY 2018	\$1,197,109	\$1,113,793	\$57,146	440	464
FY 2019	\$575,601	\$575,580	\$40,627	160	165
<b>13041521051 - Rend Lake Coll Dist 521</b>					
FY 2018	\$87,012	\$87,012	\$4,351	20	21
FY 2019	\$87,012	\$87,012	\$4,351	20	23
<b>13058501026 - Sandoval CUSD 501</b>					
FY 2018	\$117,503	\$102,010	\$0	40	44
FY 2019	\$184,322	\$165,545	\$0	60	67

	Total Budget (\$)	Total Expenditures (\$)	Administrative Expenditures (\$)	Children To Be Served (#)	Children Actually Served (#)
<b>13058722026 - Odin PSD 722</b>					
FY 2018	\$128,198	\$128,198	\$0	40	40
<b>13095049004 - Nashville CCSD 49</b>					
FY 2018	\$217,148	\$216,600	\$0	60	67
FY 2019	\$205,629	\$205,629	\$0	60	60
<b>15016022P00 - Childrens Home and Aid Society</b>					
FY 2018	\$502,573	\$501,314	\$23,894	179	161
FY 2019	\$603,500	\$603,500	\$25,115	207	222
<b>15016071P00 - Catholic Bishop of Chicago</b>					
FY 2018	\$192,427	\$192,427	\$45	60	60
FY 2019	\$267,001	\$267,001	\$0	80	80
<b>15016191P00 - Metropolitan Family Services</b>					
FY 2019	\$479,724	\$479,724	\$20,008	200	93
<b>15016299025 - City of Chicago SD 299</b>					
FY 2018	\$122,612,100	\$122,612,100	\$3,040,199	20112	18966
FY 2019	\$151,288,219	\$151,288,219	\$3,765,627	22000	17349
<b>15016780P00 - IL Action for Children</b>					
FY 2018	\$3,820,972	\$3,820,972	\$270,757	797	845
FY 2019	\$3,515,847	\$3,515,847	\$337,244	780	805
<b>16019425026 - Indian Creek CUSD 425</b>					
FY 2019	\$141,081	\$133,389	\$14,131	40	12
<b>16019426026 - Hiawatha CUSD 426</b>					
FY 2018	\$151,536	\$148,472	\$0	40	42
<b>16019428026 - DeKalb CUSD 428</b>					
FY 2018	\$556,200	\$556,200	\$0	240	210
FY 2019	\$615,603	\$615,603	\$0	240	220
<b>16019430026 - Sandwich CUSD 430</b>					
FY 2018	\$259,550	\$259,550	\$13,028	80	87
FY 2019	\$261,362	\$261,362	\$18,490	80	100
<b>17020015026 - Clinton CUSD 15</b>					
FY 2018	\$222,396	\$219,539	\$0	88	95
FY 2019	\$324,510	\$320,996	\$1,284	120	118
<b>17020018026 - Blue Ridge CUSD 18</b>					
FY 2018	\$223,496	\$223,496	\$0	60	66
FY 2019	\$234,117	\$216,893	\$0	60	69
<b>17053005026 - Woodland CUSD 5</b>					
FY 2018	\$156,167	\$155,074	\$0	40	38
FY 2019	\$113,248	\$113,248	\$0	40	26
<b>17053006J26 - Tri Point CUSD 6-J</b>					
FY 2018	\$111,221	\$111,221	\$0	48	44
FY 2019	\$119,718	\$119,709	\$0	48	26
<b>17053008026 - Prairie Central CUSD 8</b>					
FY 2018	\$243,866	\$243,866	\$0	140	139
FY 2019	\$230,270	\$230,270	\$19,300	125	132



	Total Budget (\$)	Total Expenditures (\$)	Administrative Expenditures (\$)	Children To Be Served (#)	Children Actually Served (#)
<b>17053074027 - Flanagan-Cornell Dist 74</b>					
FY 2018	\$208,735	\$208,735	\$3,484	47	56
FY 2019	\$192,129	\$192,129	\$4,352	60	49
<b>17053232002 - Dwight Common SD 232</b>					
FY 2018	\$238,260	\$237,481	\$0	80	77
FY 2019	\$218,378	\$218,006	\$0	90	80
<b>17053429004 - Pontiac CCSD 429</b>					
FY 2018	\$379,947	\$378,664	\$0	100	107
FY 2019	\$271,951	\$266,439	\$0	100	109
<b>17053435004 - Odell CCSD 435</b>					
FY 2018	\$99,400	\$99,400	\$0	40	24
FY 2019	\$102,601	\$99,781	\$0	40	28
<b>17053438004 - Saunemin CCSD 438</b>					
FY 2018	\$57,950	\$57,950	\$0	20	19
FY 2019	\$76,891	\$76,891	\$0	30	16
<b>17054027002 - Lincoln ESD 27</b>					
FY 2018	\$146,640	\$144,594	\$0	40	42
FY 2019	\$153,721	\$148,621	\$0	40	74
<b>17064002026 - LeRoy CUSD 2</b>					
FY 2018	\$133,600	\$133,568	\$10,640	40	43
FY 2019	\$130,681	\$130,681	\$6,012	40	52
<b>17064004026 - Heyworth CUSD 4</b>					
FY 2019	\$173,285	\$173,285	\$0	60	59
<b>17064005026 - McLean County USD 5</b>					
FY 2018	\$969,776	\$968,579	\$46,033	200	263
FY 2019	\$766,080	\$722,386	\$34,560	320	333
<b>17064016026 - Olympia CUSD 16</b>					
FY 2018	\$188,068	\$184,070	\$0	100	87
<b>17064019026 - Ridgeview CUSD 19</b>					
FY 2018	\$140,492	\$139,641	\$10,456	40	40
FY 2019	\$147,573	\$147,553	\$8,929	40	42
<b>17064087025 - Bloomington SD 87</b>					
FY 2018	\$1,196,027	\$1,196,027	\$30,421	260	278
FY 2019	\$735,379	\$735,379	\$28,341	260	288
<b>19022002002 - Bensenville SD 2</b>					
FY 2018	\$277,804	\$277,804	\$38,409	120	137
FY 2019	\$371,940	\$371,940	\$0	160	159
<b>19022004002 - Addison SD 4</b>					
FY 2018	\$360,500	\$340,611	\$977	120	120
FY 2019	\$381,742	\$381,742	\$819	120	121
<b>19022007002 - Wood Dale SD 7</b>					
FY 2018	\$439,079	\$439,079	\$29,406	140	138
FY 2019	\$425,461	\$425,461	\$0	130	142
<b>19022011002 - Medinah SD 11</b>					
FY 2019	\$282,162	\$223,554	\$16,861	80	54

	Total Budget (\$)	Total Expenditures (\$)	Administrative Expenditures (\$)	Children To Be Served (#)	Children Actually Served (#)
<b>19022015002 - Marquardt SD 15</b>					
FY 2018	\$123,600	\$123,600	\$0	40	45
<b>19022016002 - Queen Bee SD 16</b>					
FY 2018	\$178,900	\$178,900	\$0	60	101
FY 2019	\$136,984	\$136,984	\$0	60	110
<b>19022020002 - Keeneyville SD 20</b>					
FY 2018	\$179,184	\$179,184	\$5,763	80	83
FY 2019	\$177,185	\$177,185	\$0	80	79
<b>19022025002 - Benjamin SD 25</b>					
FY 2018	\$48,197	\$48,187	\$0	20	19
<b>19022033002 - West Chicago ESD 33</b>					
FY 2018	\$1,877,344	\$1,875,845	\$62,869	240	455
FY 2019	\$974,291	\$974,291	\$67,723	180	233
<b>19022041002 - Glen Ellyn SD 41</b>					
FY 2019	\$511,418	\$511,418	\$0	145	161
<b>19022044002 - Lombard SD 44</b>					
FY 2018	\$301,020	\$299,017	\$0	120	216
FY 2019	\$447,672	\$447,672	\$5,384	200	166
<b>19022045002 - SD 45 DuPage County</b>					
FY 2018	\$261,344	\$261,344	\$23,438	90	202
FY 2019	\$369,960	\$369,954	\$25,583	120	175
<b>19022058002 - Downers Grove GSD 58</b>					
FY 2018	\$139,100	\$138,725	\$4,766	40	87
FY 2019	\$365,184	\$361,323	\$0	110	133
<b>19022063002 - Cass SD 63</b>					
FY 2018	\$236,150	\$236,070	\$0	40	75
FY 2019	\$156,642	\$156,411	\$0	50	67
<b>19022064P00 - Caboose Club Inc</b>					
FY 2018	\$122,518	\$122,518	\$3,700	40	43
FY 2019	\$121,961	\$121,961	\$700	40	27
<b>19022068002 - Woodridge SD 68</b>					
FY 2018	\$417,918	\$416,565	\$0	160	159
FY 2019	\$522,723	\$522,723	\$0	165	176
<b>19022073P00 - Educare of West Dupage</b>					
FY 2019	\$119,919	\$119,919	\$0	34	34
<b>19022093004 - CCSD 93</b>					
FY 2018	\$106,760	\$95,835	\$0	48	26
FY 2019	\$72,036	\$72,036	\$0	30	49
<b>19022180004 - CCSD 180</b>					
FY 2018	\$135,475	\$135,475	\$0	80	55
<b>19022201026 - CUSD 201</b>					
FY 2018	\$156,739	\$156,739	\$0	30	34
FY 2019	\$128,635	\$128,635	\$0	30	32
<b>19022203026 - Naperville CUSD 203</b>					
FY 2018	\$702,940	\$676,909	\$12,624	150	188
FY 2019	\$459,316	\$377,712	\$3,391	170	190

	Total Budget (\$)	Total Expenditures (\$)	Administrative Expenditures (\$)	Children To Be Served (#)	Children Actually Served (#)
<b>19022204026 - Indian Prairie CUSD 204</b>					
FY 2018	\$247,200	\$247,191	\$0	80	86
FY 2019	\$267,001	\$267,001	\$0	80	81
<b>19022205026 - Elmhurst SD 205</b>					
FY 2018	\$119,037	\$113,615	\$0	40	41
FY 2019	\$244,063	\$240,997	\$0	80	92
<b>20024001026 - Edwards County CUSD 1</b>					
FY 2018	\$103,623	\$101,565	\$5,405	40	46
<b>20030007026 - Gallatin CUSD 7</b>					
FY 2018	\$190,878	\$190,692	\$0	40	48
FY 2019	\$197,959	\$197,751	\$0	40	55
<b>20033010026 - Hamilton Co CUSD 10</b>					
FY 2018	\$458,046	\$458,046	\$22,637	76	98
FY 2019	\$504,953	\$504,953	\$17,368	93	94
<b>20035001026 - Hardin County CUSD 1</b>					
FY 2018	\$85,316	\$85,316	\$1,217	20	23
FY 2019	\$53,261	\$53,261	\$1,217	20	21
<b>20076001026 - Pope Co CUD 1</b>					
FY 2018	\$197,492	\$197,492	\$0	40	40
<b>20083001026 - Galatia CUSD 1</b>					
FY 2018	\$131,079	\$131,079	\$3,580	40	42
FY 2019	\$125,531	\$125,531	\$5,746	40	35
<b>20083002026 - Carrier Mills-Stonefort CUSD 2</b>					
FY 2018	\$107,897	\$107,897	\$4,864	40	40
FY 2019	\$108,907	\$108,907	\$4,003	60	22
<b>20083003026 - Harrisburg CUSD 3</b>					
FY 2018	\$334,784	\$334,784	\$0	80	66
FY 2019	\$333,946	\$333,946	\$0	80	93
<b>20083004026 - Eldorado CUSD 4</b>					
FY 2018	\$440,225	\$440,225	\$6,580	120	92
FY 2019	\$309,926	\$309,926	\$5,000	120	82
<b>20083533051 - Southeastern IL College 533</b>					
FY 2018	\$156,166	\$156,166	\$9,492	40	41
FY 2019	\$123,600	\$123,600	\$9,280	40	33
<b>20093017024 - Allendale CCSD 17</b>					
FY 2018	\$61,800	\$59,872	\$0	20	20
FY 2019	\$60,000	\$56,785	\$0	20	22
<b>20093348026 - Wabash CUSD 348</b>					
FY 2018	\$279,760	\$279,760	\$10,335	80	89
FY 2019	\$267,001	\$267,001	\$0	80	90
<b>20096009P00 - Kiddie Kollege of Fairfield</b>					
FY 2018	\$131,940	\$131,940	\$12,787	40	42
FY 2019	\$133,501	\$133,501	\$13,336	40	51
<b>20096100026 - Wayne City CUSD 100</b>					
FY 2018	\$124,512	\$124,512	\$6,077	40	41
FY 2019	\$130,681	\$130,681	\$6,993	40	65

	Total Budget (\$)	Total Expenditures (\$)	Administrative Expenditures (\$)	Children To Be Served (#)	Children Actually Served (#)
<b>20096112004 - Fairfield PSD 112</b>					
FY 2018	\$490,800	\$368,201	\$13,514	120	130
FY 2019	\$392,042	\$392,042	\$14,334	120	128
<b>20096200026 - North Wayne CUSD 200</b>					
FY 2018	\$90,375	\$90,375	\$1,149	20	22
FY 2019	\$79,075	\$79,075	\$310	20	22
<b>20097001026 - Grayville CUSD 1</b>					
FY 2018	\$114,623	\$114,108	\$2,831	40	31
FY 2019	\$124,524	\$124,524	\$2,500	40	35
<b>20097003026 - Norris City-Omaha-Enfield CUSD 3</b>					
FY 2018	\$128,620	\$128,620	\$787	40	36
<b>20097005026 - Carmi-White County CUSD 5</b>					
FY 2018	\$275,596	\$275,517	\$13,953	80	91
FY 2019	\$283,033	\$283,033	\$2,600	80	96
<b>21028017P00 - Kids Country Inc</b>					
FY 2018	\$123,025	\$123,025	\$9,339	40	46
<b>21028022P00 - Rascal X-Press Inc</b>					
FY 2018	\$124,976	\$124,976	\$5,829	40	40
FY 2019	\$130,681	\$130,681	\$9,369	40	42
<b>21044001026 - Goreville CUD 1</b>					
FY 2018	\$310,305	\$306,707	\$21,115	40	45
FY 2019	\$286,364	\$283,603	\$17,889	40	35
<b>21044032003 - New Simpson Hill SD 32</b>					
FY 2018	\$114,150	\$114,150	\$3,500	40	39
FY 2019	\$115,231	\$115,231	\$4,500	40	45
<b>21044055002 - Vienna SD 55</b>					
FY 2018	\$137,029	\$137,029	\$7,500	40	38
FY 2019	\$122,930	\$122,930	\$1,800	40	45
<b>21044064002 - Cypress SD 64</b>					
FY 2018	\$70,207	\$70,207	\$0	20	20
FY 2019	\$75,157	\$75,157	\$0	20	20
<b>21061001026 - Massac UD 1</b>					
FY 2019	\$423,242	\$361,289	\$29,237	120	128
<b>21061038026 - Joppa-Maple Grove UD 38</b>					
FY 2018	\$62,346	\$60,789	\$0	20	23
FY 2019	\$65,886	\$65,886	\$0	20	19
<b>21100019P00 - The Yellow Brick Rd</b>					
FY 2018	\$135,062	\$120,523	\$5,318	40	35
<b>21100023P00 - Small World CDC Inc</b>					
FY 2018	\$123,600	\$50,613	\$3,046	40	27
<b>21100530051 - John A Logan College Dist 530</b>					
FY 2018	\$116,227	\$108,361	\$5,797	40	41
<b>21100801060 - Williamson Co Spec Educ District</b>					
FY 2018	\$1,744,738	\$1,744,738	\$119,487	550	580
FY 2019	\$2,018,364	\$2,018,364	\$117,454	600	608

	Total Budget (\$)	Total Expenditures (\$)	Administrative Expenditures (\$)	Children To Be Served (#)	Children Actually Served (#)
<b>24032001026 - Coal City CUSD 1</b>					
FY 2018	\$173,001	\$173,001	\$0	60	38
FY 2019	\$175,971	\$172,801	\$0	60	54
<b>24032054002 - Morris SD 54</b>					
FY 2018	\$174,180	\$174,180	\$0	108	116
FY 2019	\$412,265	\$412,214	\$0	128	123
<b>24032201004 - Minooka CCSD 201</b>					
FY 2018	\$324,360	\$324,360	\$23,744	120	176
<b>24047088026 - Plano CUSD 88</b>					
FY 2018	\$337,571	\$332,681	\$0	100	116
FY 2019	\$383,695	\$378,307	\$0	108	124
<b>24047115026 - Yorkville CUSD 115</b>					
FY 2019	\$282,162	\$247,770	\$0	80	114
<b>24047308026 - CUSD 308</b>					
FY 2018	\$899,910	\$899,910	\$4,000	320	354
FY 2019	\$1,315,265	\$1,315,265	\$0	440	437
<b>26000000000 - Hancck/Fultn/Schuylr/McDonogh ROE</b>					
FY 2018	\$397,923	\$397,923	\$6,175	157	152
FY 2019	\$429,288	\$429,288	\$6,189	160	164
<b>26029001026 - Astoria CUSD 1</b>					
FY 2018	\$70,035	\$65,363	\$0	22	37
FY 2019	\$96,103	\$87,207	\$0	40	39
<b>26029002026 - V I T CUSD 2</b>					
FY 2018	\$123,600	\$123,600	\$5,517	40	41
FY 2019	\$123,600	\$123,600	\$5,642	40	47
<b>26029003026 - CUSD 3 Fulton County</b>					
FY 2018	\$66,659	\$66,659	\$0	15	15
FY 2019	\$87,567	\$87,567	\$0	20	13
<b>26029004026 - Spoon River Valley CUSD 4</b>					
FY 2018	\$123,600	\$123,600	\$362	40	35
FY 2019	\$123,600	\$123,600	\$1,197	40	35
<b>26029066025 - Canton Union SD 66</b>					
FY 2018	\$275,200	\$275,200	\$0	80	88
FY 2019	\$267,001	\$267,000	\$0	80	92
<b>26029097026 - Lewistown CUSD 97</b>					
FY 2018	\$123,600	\$123,600	\$0	40	44
<b>26034317004 - Carthage ESD 317</b>					
FY 2018	\$123,600	\$123,536	\$5,569	40	35
FY 2019	\$130,681	\$119,623	\$9,894	40	21
<b>26034325026 - Nauvoo-Colusa CUSD 325</b>					
FY 2018	\$150,453	\$150,453	\$7,853	20	22
FY 2019	\$153,993	\$153,993	\$6,596	20	20
<b>26034327004 - Dallas ESD 327</b>					
FY 2018	\$125,773	\$125,773	\$4,470	20	21
FY 2019	\$104,563	\$104,563	\$5,268	20	21

	Total Budget (\$)	Total Expenditures (\$)	Administrative Expenditures (\$)	Children To Be Served (#)	Children Actually Served (#)
<b>26034328024 - Hamilton CCSD 328</b>					
FY 2018	\$95,857	\$84,639	\$0	40	41
FY 2019	\$102,938	\$102,278	\$0	40	43
<b>26034337026 - Southeastern CUSD 337</b>					
FY 2018	\$113,365	\$113,365	\$0	40	40
FY 2019	\$112,331	\$112,331	\$0	40	43
<b>26034347004 - La Harpe CSD 347</b>					
FY 2018	\$91,335	\$91,335	\$0	20	21
FY 2019	\$89,173	\$89,173	\$0	20	24
<b>26062103026 - West Prairie CUSD 103</b>					
FY 2018	\$160,754	\$160,072	\$0	60	60
<b>26062170026 - Bushnell Prairie City CUSD 170</b>					
FY 2018	\$156,368	\$145,780	\$2,500	80	80
FY 2019	\$136,997	\$133,679	\$2,500	80	71
<b>26062185026 - Macomb CUSD 185</b>					
FY 2018	\$314,700	\$314,700	\$0	120	127
FY 2019	\$339,101	\$339,095	\$0	120	122
<b>26085005026 - Schuyler-Industry CUSD 5</b>					
FY 2018	\$292,511	\$292,511	\$29,845	100	100
FY 2019	\$302,314	\$302,314	\$27,575	100	105
<b>28000000000 - Bureau/Henry/Stark ROE</b>					
FY 2018	\$315,238	\$288,659	\$448	100	127
<b>28006084004 - Malden CCSD 84</b>					
FY 2018	\$124,859	\$124,859	\$1,100	40	16
FY 2019	\$122,820	\$122,820	\$1,000	40	20
<b>28006094004 - Ladd CCSD 94</b>					
FY 2018	\$79,986	\$79,986	\$0	20	21
<b>28006099004 - Spring Valley CCSD 99</b>					
FY 2018	\$191,400	\$191,400	\$0	60	70
FY 2019	\$200,250	\$198,327	\$0	60	64
<b>28006103022 - DePue USD 103</b>					
FY 2018	\$146,600	\$146,600	\$500	60	46
FY 2019	\$138,450	\$134,427	\$0	60	48
<b>28006115002 - Princeton ESD 115</b>					
FY 2018	\$444,515	\$444,514	\$20,388	160	152
FY 2019	\$484,116	\$484,116	\$15,331	160	180
<b>28006340026 - Bureau Valley CUSD 340</b>					
FY 2018	\$331,163	\$331,163	\$13,684	80	80
FY 2019	\$265,843	\$265,843	\$7,788	80	82
<b>28037190002 - Colona SD 190</b>					
FY 2018	\$109,307	\$103,334	\$0	60	65
FY 2019	\$119,928	\$106,169	\$0	60	64
<b>28037224026 - Galva CUSD 224</b>					
FY 2018	\$126,147	\$126,124	\$0	40	47
FY 2019	\$123,265	\$123,265	\$0	40	46

	Total Budget (\$)	Total Expenditures (\$)	Administrative Expenditures (\$)	Children To Be Served (#)	Children Actually Served (#)
<b>28037225026 - AlWood CUSD 225</b>					
FY 2018	\$106,579	\$106,047	\$0	40	41
FY 2019	\$113,660	\$111,046	\$0	40	34
<b>28037226026 - Annawan CUSD 226</b>					
FY 2018	\$99,089	\$99,089	\$0	40	39
FY 2019	\$99,089	\$99,089	\$0	40	37
<b>28037227026 - Cambridge CUSD 227</b>					
FY 2018	\$75,600	\$75,600	\$0	40	43
<b>28037228026 - Geneseo CUSD 228</b>					
FY 2018	\$233,967	\$149,208	\$0	40	59
<b>28037229026 - Kewanee CUSD 229</b>					
FY 2018	\$511,963	\$511,963	\$19,040	100	121
FY 2019	\$751,367	\$751,367	\$35,179	180	201
<b>28037230026 - Wethersfield CUSD 230</b>					
FY 2018	\$134,547	\$134,547	\$0	40	40
FY 2019	\$130,723	\$130,723	\$0	40	44
<b>28088001026 - Bradford CUSD 1</b>					
FY 2018	\$47,875	\$45,597	\$0	20	3
FY 2019	\$51,415	\$51,125	\$0	20	21
<b>28088100026 - Stark County CUSD 100</b>					
FY 2018	\$117,467	\$117,467	\$0	40	48
FY 2019	\$171,253	\$161,817	\$0	55	51
<b>30002001022 - Cairo USD 1</b>					
FY 2018	\$340,528	\$340,513	\$0	40	46
FY 2019	\$347,609	\$347,609	\$0	40	37
<b>30002005026 - Egyptian CUSD 5</b>					
FY 2018	\$266,463	\$266,463	\$9,766	60	66
FY 2019	\$262,120	\$262,120	\$10,197	60	66
<b>30039095002 - Carbondale ESD 95</b>					
FY 2018	\$524,400	\$524,400	\$25,686	160	180
FY 2019	\$400,501	\$400,501	\$4,794	120	132
<b>30039140004 - Unity Point CCSD 140</b>					
FY 2018	\$376,124	\$376,124	\$455	80	92
<b>30039186026 - Murphysboro CUSD 186</b>					
FY 2018	\$3,807,828	\$3,807,828	\$0	820	824
FY 2019	\$3,952,984	\$3,842,079	\$0	820	823
<b>30077100026 - Century CUSD 100</b>					
FY 2019	\$143,901	\$143,855	\$0	40	42
<b>30077101026 - Meridian CUSD 101</b>					
FY 2018	\$288,400	\$281,713	\$0	40	43
FY 2019	\$295,481	\$278,099	\$0	40	45
<b>30091016004 - Lick Creek CCSD 16</b>					
FY 2018	\$74,710	\$74,710	\$1,746	20	20
FY 2019	\$78,250	\$78,250	\$0	20	18

	Total Budget (\$)	Total Expenditures (\$)	Administrative Expenditures (\$)	Children To Be Served (#)	Children Actually Served (#)
<b>30091017022 - Cobden SUD 17</b>					
FY 2018	\$123,600	\$122,062	\$8,139	40	46
<b>30091037004 - Anna CCSD 37</b>					
FY 2018	\$124,728	\$124,728	\$500	40	56
FY 2019	\$192,680	\$192,562	\$500	60	67
<b>30091043004 - County of Union Sch Dist No43</b>					
FY 2018	\$128,980	\$128,980	\$0	40	36
<b>30091066022 - Dongola USD 66</b>					
FY 2018	\$91,827	\$90,545	\$0	20	20
FY 2019	\$90,110	\$89,577	\$0	20	23
<b>31045046022 - SD U-46</b>					
FY 2018	\$3,965,211	\$3,714,479	\$108,477	1146	1252
FY 2019	\$4,288,099	\$4,225,453	\$109,456	1179	1251
<b>31045064P00 - Cambridge Lakes Preschool</b>					
FY 2018	\$129,288	\$129,288	\$1,376	40	42
<b>31045076P00 - Edu Kare Inc</b>					
FY 2019	\$134,027	\$112,340	\$13,329	38	18
<b>31045087X01 - Summit School</b>					
FY 2018	\$185,400	\$185,400	\$3,963	60	60
FY 2019	\$333,751	\$333,751	\$18,640	100	102
<b>31045129022 - Aurora West USD 129</b>					
FY 2018	\$1,607,028	\$1,572,041	\$78,121	340	625
FY 2019	\$1,961,429	\$1,856,537	\$75,626	400	602
<b>31045131022 - Aurora East USD 131</b>					
FY 2018	\$2,966,400	\$2,923,191	\$276,202	600	579
FY 2019	\$2,857,529	\$2,698,416	\$269,918	558	552
<b>31045300026 - CUSD 300</b>					
FY 2018	\$1,421,400	\$1,405,851	\$0	462	524
FY 2019	\$1,595,584	\$1,587,473	\$86,749	480	524
<b>31045303026 - St Charles CUSD 303</b>					
FY 2018	\$223,600	\$222,182	\$0	40	44
FY 2019	\$265,589	\$262,295	\$0	80	80
<b>32038004026 - Central CUSD 4</b>					
FY 2018	\$224,350	\$216,294	\$11,000	60	46
FY 2019	\$224,471	\$224,471	\$12,150	60	45
<b>32038124026 - Milford Area Public Schools District 124</b>					
FY 2018	\$615,400	\$615,400	\$28,504	170	190
<b>32046001026 - Momence CUSD 1</b>					
FY 2018	\$337,200	\$337,200	\$12,150	80	88
FY 2019	\$250,314	\$250,314	\$14,647	75	76
<b>32046002026 - Herscher CUSD 2</b>					
FY 2018	\$243,900	\$237,509	\$0	40	42
FY 2019	\$273,754	\$273,754	\$0	60	62
<b>32046005026 - Manteno CUSD 5</b>					
FY 2018	\$247,200	\$237,761	\$5,235	105	106



	Total Budget (\$)	Total Expenditures (\$)	Administrative Expenditures (\$)	Children To Be Served (#)	Children Actually Served (#)
<b>32046031P00 - Lasting Impressions Visions Inc</b>					
FY 2018	\$123,600	\$123,600	\$0	40	42
FY 2019	\$130,681	\$130,681	\$3,904	40	40
<b>32046053002 - Bourbonnais SD 53</b>					
FY 2018	\$177,761	\$177,761	\$0	80	83
FY 2019	\$187,770	\$182,448	\$0	80	88
<b>32046061002 - Bradley SD 61</b>					
FY 2018	\$567,531	\$567,531	\$0	132	143
FY 2019	\$762,607	\$762,607	\$0	170	192
<b>32046111025 - Kankakee SD 111</b>					
FY 2018	\$1,041,926	\$980,971	\$719	200	215
FY 2019	\$733,929	\$711,288	\$840	200	153
<b>32046256004 - St Anne CCSD 256</b>					
FY 2018	\$123,600	\$123,600	\$1,449	40	44
<b>32046259004 - Pembroke CCSD 259</b>					
FY 2018	\$242,825	\$239,713	\$0	40	40
FY 2019	\$234,406	\$226,035	\$0	40	80
<b>33000000000 - Henderson/Knox/Mercer/Warren ROE</b>					
FY 2018	\$2,271,296	\$2,271,296	\$56,757	566	556
FY 2019	\$2,085,178	\$2,085,178	\$23,921	542	638
<b>33094238026 - Monmouth-Roseville CUSD 238</b>					
FY 2018	\$499,426	\$494,071	\$23,839	120	135
<b>34049001002 - Winthrop Harbor SD 1</b>					
FY 2019	\$105,811	\$94,217	\$0	30	35
<b>34049006002 - Zion ESD 6</b>					
FY 2018	\$654,999	\$654,999	\$0	300	186
FY 2019	\$566,976	\$550,058	\$0	240	320
<b>34049031P00 - One Hope United-Northern Region</b>					
FY 2018	\$256,370	\$256,370	\$12,360	80	86
FY 2019	\$261,362	\$206,233	\$13,000	80	78
<b>34049034004 - Antioch CCSD 34</b>					
FY 2018	\$386,435	\$386,435	\$34,707	100	102
FY 2019	\$360,451	\$353,517	\$15,440	108	109
<b>34049034P00 - Highland Pk Com Nur Sch and DC</b>					
FY 2018	\$162,531	\$162,531	\$0	40	37
FY 2019	\$133,501	\$130,682	\$0	40	40
<b>34049037002 - Gavin SD 37</b>					
FY 2018	\$185,075	\$180,204	\$1,500	80	83
FY 2019	\$199,237	\$184,952	\$2,500	80	76
<b>34049046004 - Grayslake CCSD 46</b>					
FY 2018	\$161,733	\$161,337	\$0	40	43
<b>34049050004 - Woodland CCSD 50</b>					
FY 2018	\$266,074	\$266,074	\$0	80	121
FY 2019	\$382,403	\$382,403	\$0	120	104

	Total Budget (\$)	Total Expenditures (\$)	Administrative Expenditures (\$)	Children To Be Served (#)	Children Actually Served (#)
<b>34049056002 - Gurnee SD 56</b>					
FY 2018	\$198,526	\$194,594	\$0	80	110
FY 2019	\$197,025	\$197,025	\$0	80	114
<b>34049060026 - Waukegan CUSD 60</b>					
FY 2018	\$3,596,028	\$3,596,028	\$174,952	840	789
<b>34049073004 - Hawthorn CCSD 73</b>					
FY 2018	\$370,800	\$370,200	\$0	120	135
FY 2019	\$457,383	\$457,383	\$56	140	123
<b>34049075002 - Mundelein ESD 75</b>					
FY 2018	\$373,461	\$365,048	\$15,371	100	132
<b>34049076002 - Diamond Lake SD 76</b>					
FY 2018	\$185,130	\$185,130	\$0	80	84
FY 2019	\$199,292	\$199,292	\$0	80	85
<b>34049079002 - Fremont SD 79</b>					
FY 2018	\$163,600	\$162,851	\$0	40	38
<b>34049080P00 - American Association of Univ</b>					
FY 2018	\$138,175	\$136,762	\$10,721	40	28
FY 2019	\$130,681	\$130,681	\$9,675	40	44
<b>34049112002 - North Shore SD 112</b>					
FY 2018	\$984,300	\$984,300	\$0	160	201
<b>34049114002 - Fox Lake GSD 114</b>					
FY 2018	\$211,103	\$209,444	\$5,824	80	78
FY 2019	\$277,645	\$277,645	\$0	100	80
<b>34049116026 - Round Lake CUSD 116</b>					
FY 2018	\$307,713	\$307,713	\$0	80	126
FY 2019	\$425,173	\$424,361	\$0	150	145
<b>34049118026 - Wauconda CUSD 118</b>					
FY 2018	\$281,015	\$281,015	\$5,247	80	85
FY 2019	\$259,187	\$259,187	\$11,660	100	97
<b>34049187026 - North Chicago SD 187</b>					
FY 2018	\$1,883,176	\$1,822,764	\$178,074	120	143
FY 2019	\$971,552	\$971,552	\$48,954	180	183
<b>34049220026 - Barrington CUSD 220</b>					
FY 2018	\$2,189,259	\$2,171,017	\$61,205	221	223
FY 2019	\$262,035	\$262,035	\$602	180	218
<b>34049532051 - College of Lake County Dist 532</b>					
FY 2019	\$70,540	\$14,921	\$0	20	13
<b>35050044002 - Streator ESD 44</b>					
FY 2018	\$358,023	\$357,697	\$0	80	91
FY 2019	\$653,404	\$653,404	\$0	200	190
<b>35050122002 - La Salle ESD 122</b>					
FY 2018	\$369,900	\$363,491	\$33,570	100	109
FY 2019	\$539,551	\$519,622	\$26,023	120	127
<b>35050124002 - Peru ESD 124</b>					
FY 2019	\$269,814	\$269,814	\$6,832	75	82

	Total Budget (\$)	Total Expenditures (\$)	Administrative Expenditures (\$)	Children To Be Served (#)	Children Actually Served (#)
<b>35050125002 - Oglesby ESD 125</b>					
FY 2018	\$493,151	\$493,151	\$0	160	141
FY 2019	\$524,222	\$524,222	\$0	160	148
<b>35050141002 - Ottawa ESD 141</b>					
FY 2018	\$627,745	\$624,407	\$11,200	180	216
FY 2019	\$579,635	\$574,930	\$8,200	162	200
<b>35050150002 - Marseilles ESD 150</b>					
FY 2019	\$215,850	\$215,850	\$0	60	63
<b>35050289004 - Mendota CCSD 289</b>					
FY 2018	\$133,877	\$133,877	\$0	80	80
FY 2019	\$148,039	\$138,252	\$0	80	74
<b>35059005026 - Henry-Senachwine CUSD 5</b>					
FY 2018	\$130,810	\$130,810	\$0	50	49
FY 2019	\$167,593	\$167,593	\$0	50	59
<b>35059007026 - Midland CUSD 7</b>					
FY 2018	\$154,500	\$133,701	\$1,091	40	42
FY 2019	\$217,519	\$184,243	\$0	60	50
<b>35078535026 - Putnam County CUSD 535</b>					
FY 2018	\$266,000	\$266,000	\$2,459	80	82
FY 2019	\$265,589	\$265,589	\$487	80	85
<b>39000000000 - Macon/Piatt ROE</b>					
FY 2018	\$65,576	\$65,576	\$6,616	20	24
FY 2019	\$37,038	\$37,038	\$3,242	20	17
<b>39055001026 - Argenta-Oreana CUSD 1</b>					
FY 2018	\$206,733	\$206,733	\$0	80	93
FY 2019	\$215,010	\$213,572	\$0	80	81
<b>39055002026 - Maroa Forsyth CUSD 2</b>					
FY 2019	\$234,131	\$234,125	\$0	70	61
<b>39055003026 - Mt Zion CUSD 3</b>					
FY 2019	\$80,467	\$80,467	\$0	35	6
<b>39055011026 - Warrensburg-Latham CUSD 11</b>					
FY 2018	\$132,156	\$130,835	\$0	40	42
FY 2019	\$183,704	\$181,943	\$0	57	59
<b>39055015026 - Meridian CUSD 15</b>					
FY 2018	\$247,200	\$246,826	\$9,100	80	84
FY 2019	\$261,362	\$261,362	\$2,564	80	80
<b>39055061025 - Decatur SD 61</b>					
FY 2018	\$1,550,818	\$1,506,082	\$59,643	380	380
FY 2019	\$1,788,410	\$1,771,505	\$84,202	420	382
<b>390550610AA - Robertson Charter School</b>					
FY 2018	\$135,299	\$135,299	\$2,400	40	0
FY 2019	\$123,600	\$123,600	\$600	40	44
<b>39074005026 - Bement CUSD 5</b>					
FY 2018	\$91,885	\$91,433	\$0	40	22
FY 2019	\$89,069	\$81,114	\$0	40	29

	Total Budget (\$)	Total Expenditures (\$)	Administrative Expenditures (\$)	Children To Be Served (#)	Children Actually Served (#)
<b>39074025026 - Monticello CUSD 25</b>					
FY 2019	\$195,000	\$193,651	\$0	65	62
<b>39074057026 - Deland-Weldon CUSD 57</b>					
FY 2018	\$114,400	\$101,506	\$4,300	20	20
FY 2019	\$85,940	\$85,940	\$2,000	20	20
<b>39074100026 - Cerro Gordo CUSD 100</b>					
FY 2019	\$141,081	\$141,081	\$0	31	32
<b>40031001026 - Carrollton CUSD 1</b>					
FY 2018	\$131,460	\$129,239	\$2,653	40	31
FY 2019	\$133,501	\$128,824	\$4,301	40	57
<b>40031003026 - North Greene CUSD 3</b>					
FY 2018	\$482,592	\$476,806	\$3,390	60	66
FY 2019	\$288,894	\$288,894	\$3,359	60	70
<b>40031010026 - Greenfield CUSD 10</b>					
FY 2018	\$143,600	\$143,513	\$2,485	40	41
FY 2019	\$130,681	\$130,642	\$0	40	45
<b>40042100026 - Jersey CUSD 100</b>					
FY 2018	\$698,355	\$698,355	\$10,085	175	170
FY 2019	\$750,172	\$716,904	\$15,395	180	189
<b>40056001026 - Carlinville CUSD 1</b>					
FY 2018	\$185,400	\$185,400	\$5,730	68	75
FY 2019	\$232,279	\$225,218	\$11,801	80	95
<b>40056002026 - Northwestern CUSD 2</b>					
FY 2018	\$123,600	\$123,600	\$250	40	42
FY 2019	\$130,681	\$130,681	\$250	40	44
<b>40056005026 - Mount Olive CUSD 5</b>					
FY 2018	\$142,939	\$141,566	\$5,911	40	41
FY 2019	\$135,020	\$134,239	\$4,285	40	48
<b>40056006026 - Staunton CUSD 6</b>					
FY 2018	\$262,491	\$251,801	\$6,238	80	86
FY 2019	\$276,653	\$257,039	\$465	80	82
<b>40056007026 - Gillespie CUSD 7</b>					
FY 2018	\$172,685	\$172,033	\$0	80	85
FY 2019	\$160,977	\$160,977	\$0	80	84
<b>40056008026 - Bunker Hill CUSD 8</b>					
FY 2018	\$104,127	\$104,127	\$0	40	45
<b>40056009026 - Southwestern CUSD 9</b>					
FY 2018	\$154,500	\$154,500	\$2,501	80	79
FY 2019	\$168,662	\$162,907	\$2,037	80	78
<b>40056034026 - North Mac CUSD 34</b>					
FY 2018	\$509,850	\$478,827	\$26,660	120	113
FY 2019	\$442,577	\$436,045	\$8,836	100	120
<b>41057001026 - Roxana CUSD 1</b>					
FY 2018	\$312,150	\$312,150	\$67	120	127
FY 2019	\$336,583	\$336,583	\$0	120	127

	Total Budget (\$)	Total Expenditures (\$)	Administrative Expenditures (\$)	Children To Be Served (#)	Children Actually Served (#)
<b>41057002026 - Triad CUSD 2</b>					
FY 2018	\$286,593	\$276,213	\$7,441	100	103
FY 2019	\$317,882	\$317,882	\$7,965	120	120
<b>41057005026 - Highland CUSD 5</b>					
FY 2018	\$202,796	\$202,251	\$0	60	68
FY 2019	\$404,960	\$393,920	\$0	120	121
<b>41057007026 - Edwardsville CUSD 7</b>					
FY 2018	\$461,170	\$441,730	\$0	136	138
FY 2019	\$485,245	\$471,541	\$402	136	153
<b>41057008026 - Bethalto CUSD 8</b>					
FY 2018	\$180,860	\$178,646	\$0	40	40
FY 2019	\$375,882	\$359,152	\$2,682	80	80
<b>41057009026 - Granite City CUSD 9</b>					
FY 2018	\$1,045,545	\$1,045,545	\$48,309	216	286
FY 2019	\$1,404,902	\$1,404,902	\$76,914	280	325
<b>41057010026 - Collinsville CUSD 10</b>					
FY 2018	\$405,589	\$401,087	\$15,428	160	191
FY 2019	\$477,303	\$476,816	\$14,150	176	189
<b>41057011026 - Alton CUSD 11</b>					
FY 2018	\$817,648	\$817,648	\$17,256	220	225
FY 2019	\$951,810	\$867,006	\$24,748	250	227
<b>41057012026 - Madison CUSD 12</b>					
FY 2018	\$454,669	\$354,738	\$5,000	60	36
FY 2019	\$465,290	\$414,696	\$5,644	60	32
<b>41057013002 - East Alton SD 13</b>					
FY 2018	\$806,206	\$806,206	\$73,538	140	156
FY 2019	\$580,873	\$580,873	\$25,147	105	114
<b>41057015003 - Wood River-Hartford ESD 15</b>					
FY 2018	\$349,355	\$349,355	\$7,406	80	91
FY 2019	\$423,470	\$423,470	\$10,879	95	114
<b>41057029P00 - Southern IL Univ-Edwardsville</b>					
FY 2019	\$141,081	\$141,081	\$6,829	40	35
<b>41057031P00 - Riverbend Headstart / Family Svcs</b>					
FY 2018	\$193,418	\$193,418	\$8,485	68	127
<b>41057046P00 - Step by Step Incorporated</b>					
FY 2018	\$140,977	\$140,977	\$3,344	40	43
FY 2019	\$194,241	\$194,241	\$7,453	60	60
<b>41057054P00 - Counton Learning Centers Inc</b>					
FY 2018	\$123,600	\$123,600	\$1,190	40	49
FY 2019	\$130,681	\$113,718	\$2,017	40	43
<b>41057064P00 - Early Explorations Inc</b>					
FY 2018	\$123,600	\$123,600	\$12,755	40	48
FY 2019	\$133,501	\$133,501	\$13,112	40	45
<b>44063012026 - Johnsburg CUSD 12</b>					
FY 2018	\$393,372	\$393,192	\$0	115	91
FY 2019	\$267,586	\$267,586	\$0	110	74

	Total Budget (\$)	Total Expenditures (\$)	Administrative Expenditures (\$)	Children To Be Served (#)	Children Actually Served (#)
<b>44063015004 - McHenry CCSD 15</b>					
FY 2018	\$499,278	\$499,278	\$0	75	45
<b>44063019024 - Alden Hebron SD 19</b>					
FY 2018	\$69,812	\$69,812	\$0	40	43
FY 2019	\$72,113	\$72,113	\$0	40	41
<b>44063026004 - Cary CCSD 26</b>					
FY 2019	\$70,540	\$70,540	\$1,309	20	20
<b>44063036002 - Harrison SD 36</b>					
FY 2018	\$123,600	\$123,600	\$3,084	40	46
FY 2019	\$133,501	\$133,501	\$3,194	40	40
<b>44063050026 - Harvard CUSD 50</b>					
FY 2018	\$256,470	\$256,470	\$21,660	202	206
FY 2019	\$318,269	\$318,269	\$23,849	220	226
<b>44063158022 - Huntley Community School District 158</b>					
FY 2018	\$266,469	\$266,469	\$2,068	135	264
FY 2019	\$287,659	\$287,659	\$1,944	135	264
<b>44063165003 - Marengo-Union E Cons D 165</b>					
FY 2018	\$200,400	\$200,400	\$0	80	89
FY 2019	\$153,900	\$153,900	\$0	60	67
<b>44063200026 - Woodstock CUSD 200</b>					
FY 2018	\$1,177,027	\$1,177,027	\$54,524	300	329
FY 2019	\$1,188,767	\$1,188,767	\$56,575	330	322
<b>45079134004 - Prairie Du Rocher CCSD 134</b>					
FY 2018	\$70,737	\$70,737	\$0	20	20
<b>45079139026 - Chester CUSD 139</b>					
FY 2018	\$201,124	\$201,124	\$0	40	62
FY 2019	\$172,026	\$172,023	\$0	40	55
<b>45079140026 - Sparta CUSD 140</b>					
FY 2018	\$241,493	\$241,493	\$0	80	69
FY 2019	\$256,829	\$239,357	\$5,645	80	70
<b>47000000000 - Lee/Ogle/Whiteside ROE</b>					
FY 2018	\$236,900	\$236,900	\$7,807	80	74
<b>47052170022 - Dixon USD 170</b>					
FY 2018	\$255,955	\$246,713	\$0	80	87
FY 2019	\$270,117	\$253,380	\$0	80	93
<b>47052272026 - Amboy CUSD 272</b>					
FY 2019	\$141,081	\$130,262	\$0	40	40
<b>47071220026 - Oregon CUSD 220</b>					
FY 2019	\$326,267	\$326,267	\$0	140	144
<b>47071223026 - Meridian CUSD 223</b>					
FY 2018	\$128,600	\$127,437	\$0	60	53
<b>47071226026 - Byron CUSD 226</b>					
FY 2018	\$110,099	\$108,133	\$0	40	34
FY 2019	\$117,180	\$113,997	\$0	40	43

	Total Budget (\$)	Total Expenditures (\$)	Administrative Expenditures (\$)	Children To Be Served (#)	Children Actually Served (#)
<b>47071231004 - Rochelle CCSD 231</b>					
FY 2018	\$201,880	\$201,880	\$0	80	83
FY 2019	\$216,042	\$216,042	\$0	80	84
<b>47098001026 - Erie CUSD 1</b>					
FY 2018	\$221,961	\$219,569	\$2,000	60	62
FY 2019	\$279,099	\$276,039	\$2,358	60	60
<b>47098002026 - River Bend CUSD 2</b>					
FY 2018	\$147,400	\$147,400	\$2,649	40	50
<b>47098003026 - Prophetstown-Lyndon-Tampico CUSD3</b>					
FY 2018	\$231,812	\$221,302	\$0	80	80
<b>47098005026 - Sterling CUSD 5</b>					
FY 2018	\$219,689	\$216,399	\$0	80	89
FY 2019	\$292,313	\$290,332	\$0	100	111
<b>47098006026 - Morrison CUSD 6</b>					
FY 2018	\$123,600	\$113,937	\$0	40	43
FY 2019	\$130,681	\$130,681	\$0	40	41
<b>47098013002 - Rock Falls ESD 13</b>					
FY 2018	\$358,141	\$358,141	\$17,934	150	161
FY 2019	\$514,200	\$514,200	\$24,984	200	212
<b>48000000000 - Peoria ROE</b>					
FY 2018	\$170,778	\$156,756	\$10,658	60	50
<b>48072005P00 - Catholic Charities of Peoria</b>					
FY 2018	\$60,807	\$45,699	\$5,459	20	19
<b>48072012P00 - Crittenton Centers</b>					
FY 2018	\$113,663	\$111,860	\$6,103	36	44
FY 2019	\$120,036	\$120,036	\$7,089	36	35
<b>48072014P00 - Neighborhood House Assoc</b>					
FY 2018	\$56,831	\$56,357	\$3,050	20	9
FY 2019	\$60,371	\$42,075	\$3,216	20	10
<b>48072030P00 - Peoria Citizens Comm for Eo Inc</b>					
FY 2018	\$119,163	\$119,163	\$0	20	22
FY 2019	\$118,613	\$95,876	\$0	20	20
<b>48072088P00 - Rogys Gingerbread House Inc</b>					
FY 2018	\$360,077	\$344,407	\$37,740	180	137
<b>48072091P00 - Cadence Education Inc</b>					
FY 2019	\$496,277	\$322,435	\$28,086	157	156
<b>48072150025 - Peoria SD 150</b>					
FY 2018	\$1,526,238	\$1,526,238	\$1,721	280	218
FY 2019	\$1,751,732	\$1,751,732	\$1,376	320	331
<b>48072325026 - Peoria Heights CUSD 325</b>					
FY 2018	\$1,821,579	\$1,821,579	\$181,282	600	615
FY 2019	\$2,099,607	\$2,099,607	\$199,420	645	665
<b>49000000000 - Rock Island ROE</b>					
FY 2018	\$1,859,400	\$1,858,676	\$130,171	600	591
FY 2019	\$1,859,530	\$1,807,010	\$177,186	520	536

	Total Budget (\$)	Total Expenditures (\$)	Administrative Expenditures (\$)	Children To Be Served (#)	Children Actually Served (#)
<b>49081020P00 - SAL Family and Community Srvcs</b>					
FY 2019	\$43,170	\$41,487	\$2,914	12	10
<b>49081034002 - Silvis SD 34</b>					
FY 2018	\$157,531	\$157,521	\$0	55	55
FY 2019	\$162,267	\$162,267	\$0	55	61
<b>49081037002 - East Moline SD 37</b>					
FY 2018	\$418,440	\$396,987	\$17,156	120	129
FY 2019	\$624,115	\$599,680	\$211	187	206
<b>49081040022 - Moline-Coal Valley CUSD 40</b>					
FY 2018	\$1,394,841	\$1,394,841	\$81,105	240	249
FY 2019	\$981,246	\$981,246	\$86,216	240	250
<b>49081041025 - Rock Island SD 41</b>					
FY 2018	\$489,928	\$489,928	\$24,020	116	162
FY 2019	\$501,544	\$499,925	\$24,490	116	169
<b>49081100026 - Riverdale CUSD 100</b>					
FY 2018	\$238,125	\$238,125	\$0	80	89
FY 2019	\$247,036	\$247,036	\$0	80	80
<b>49081200026 - Sherrard CUSD 200</b>					
FY 2018	\$123,600	\$120,213	\$0	72	70
FY 2019	\$132,558	\$124,584	\$0	72	64
<b>50082009026 - Lebanon CUSD 9</b>					
FY 2018	\$52,530	\$45,870	\$0	20	31
<b>50082019026 - Mascoutah CUD 19</b>					
FY 2018	\$235,508	\$235,508	\$0	70	84
FY 2019	\$227,822	\$227,822	\$0	70	83
<b>50082022P00 - Lessie Bates Davis Neighborhood</b>					
FY 2018	\$477,352	\$253,173	\$20,725	60	37
FY 2019	\$425,650	\$402,115	\$80,810	60	65
<b>50082025P00 - Toddle Town Day Care Center</b>					
FY 2018	\$123,600	\$123,600	\$5,481	40	49
FY 2019	\$130,681	\$130,681	\$6,578	40	44
<b>50082040026 - Marissa CUSD 40</b>					
FY 2018	\$176,326	\$163,655	\$1,969	60	58
FY 2019	\$172,852	\$172,852	\$1,774	60	69
<b>50082052P00 - Dee Dees Learning Academy</b>					
FY 2018	\$57,328	\$57,328	\$2,984	20	3
FY 2019	\$121,737	\$121,737	\$13,771	40	26
<b>50082053P00 - Jack and Jill Child Dev Ctr Inc</b>					
FY 2018	\$123,600	\$123,600	\$5,812	40	39
FY 2019	\$130,681	\$130,681	\$6,459	40	40
<b>50082066P00 - Discovery School</b>					
FY 2018	\$176,049	\$176,049	\$5,699	40	46
FY 2019	\$177,575	\$177,575	\$5,381	40	38
<b>50082085002 - Shiloh Village SD 85</b>					
FY 2018	\$122,248	\$122,248	\$0	20	0



	Total Budget (\$)	Total Expenditures (\$)	Administrative Expenditures (\$)	Children To Be Served (#)	Children Actually Served (#)
<b>50082088P00 - Smart Start Learning Ctr Inc</b>					
FY 2018	\$153,600	\$153,600	\$6,583	40	31
FY 2019	\$130,681	\$126,107	\$6,305	40	33
<b>50082090004 - O Fallon CCSD 90</b>					
FY 2018	\$201,967	\$196,316	\$9,535	80	89
FY 2019	\$210,597	\$204,107	\$9,540	80	87
<b>50082093P00 - Michelles Place Child Care Ctr</b>					
FY 2018	\$137,600	\$137,600	\$15,200	40	36
<b>50082104002 - Central SD 104</b>					
FY 2018	\$107,703	\$107,703	\$0	50	56
<b>50082104P00 - The Early Years Inc</b>					
FY 2018	\$135,470	\$135,470	\$13,873	40	32
FY 2019	\$200,250	\$200,250	\$10,300	60	50
<b>50082105002 - Pontiac-W Holliday SD 105</b>					
FY 2018	\$123,562	\$110,716	\$1,856	40	49
FY 2019	\$384,591	\$362,584	\$1,400	60	78
<b>50082110004 - Grant CCSD 110</b>					
FY 2018	\$108,257	\$108,257	\$0	40	66
<b>50082115002 - Whiteside SD 115</b>					
FY 2018	\$212,515	\$211,777	\$0	80	85
FY 2019	\$205,201	\$205,201	\$0	80	89
<b>50082116002 - High Mount SD 116</b>					
FY 2018	\$108,237	\$106,144	\$0	40	42
FY 2019	\$115,318	\$115,232	\$0	40	40
<b>50082118002 - Belleville SD 118</b>					
FY 2018	\$788,395	\$788,395	\$24,271	260	218
FY 2019	\$668,195	\$668,195	\$26,132	220	225
<b>50082175002 - Harmony Emge SD 175</b>					
FY 2018	\$294,241	\$282,470	\$5,535	80	80
FY 2019	\$326,702	\$312,677	\$9,283	80	83
<b>50082181002 - Signal Hill SD 181</b>					
FY 2018	\$123,600	\$117,545	\$4,624	26	34
<b>50082187026 - Cahokia CUSD 187</b>					
FY 2019	\$211,621	\$211,557	\$10,628	60	32
<b>50082188022 - Brooklyn UD 188</b>					
FY 2018	\$102,746	\$102,746	\$500	20	24
FY 2019	\$99,986	\$93,129	\$500	20	20
<b>50082189022 - East St Louis SD 189</b>					
FY 2018	\$1,751,000	\$1,697,544	\$121,874	200	187
<b>50082196026 - Dupo CUSD 196</b>					
FY 2018	\$276,980	\$276,980	\$19,615	80	83
FY 2019	\$288,142	\$288,142	\$25,708	80	81
<b>51065202026 - Porta CUSD 202</b>					
FY 2018	\$304,478	\$302,523	\$0	140	152
FY 2019	\$329,261	\$326,473	\$0	140	130

	Total Budget (\$)	Total Expenditures (\$)	Administrative Expenditures (\$)	Children To Be Served (#)	Children Actually Served (#)
<b>51065213026 - Athens CUSD 213</b>					
FY 2018	\$247,200	\$246,241	\$0	80	82
FY 2019	\$261,362	\$257,385	\$0	80	77
<b>51084001026 - Tri City CUSD 1</b>					
FY 2018	\$203,138	\$202,369	\$2,967	70	65
FY 2019	\$191,426	\$191,426	\$3,200	70	56
<b>51084005026 - Ball Chatham CUSD 5</b>					
FY 2018	\$327,688	\$327,688	\$0	105	60
FY 2019	\$341,726	\$340,397	\$0	135	147
<b>51084008026 - Pleasant Plains CUSD 8</b>					
FY 2018	\$132,800	\$120,043	\$0	40	37
FY 2019	\$118,040	\$109,573	\$0	40	32
<b>51084010026 - Auburn CUSD 10</b>					
FY 2018	\$386,189	\$386,189	\$0	130	120
FY 2019	\$314,770	\$314,770	\$0	100	100
<b>51084011026 - Pawnee CUSD 11</b>					
FY 2018	\$88,352	\$88,352	\$0	20	12
FY 2019	\$99,404	\$99,404	\$0	20	6
<b>51084014026 - Riverton CUSD 14</b>					
FY 2018	\$408,313	\$408,313	\$13,848	130	80
FY 2019	\$392,563	\$392,563	\$16,186	130	105
<b>51084015026 - Williamsville CUSD 15</b>					
FY 2018	\$128,300	\$128,300	\$330	40	37
FY 2019	\$120,381	\$120,381	\$72	40	37
<b>51084016026 - New Berlin CUSD 16</b>					
FY 2018	\$185,400	\$185,400	\$1,934	60	61
FY 2019	\$261,362	\$261,362	\$2,233	75	85
<b>51084069P00 - Care-O-Sel Day Care Inc</b>					
FY 2018	\$250,798	\$250,798	\$16,383	40	54
FY 2019	\$257,879	\$257,879	\$17,055	40	51
<b>51084186025 - Springfield SD 186</b>					
FY 2018	\$3,344,858	\$3,338,238	\$206,683	600	903
FY 2019	\$3,474,286	\$3,470,513	\$175,544	600	644
<b>53060126026 - Havana CUSD 126</b>					
FY 2018	\$264,960	\$249,571	\$1,747	80	56
FY 2019	\$221,760	\$221,759	\$221	72	73
<b>53060189026 - Illini Central CUSD 189</b>					
FY 2018	\$249,720	\$249,720	\$4,250	80	85
FY 2019	\$262,382	\$262,382	\$4,250	80	82
<b>53060191026 - Midwest Central CUSD 191</b>					
FY 2019	\$359,751	\$359,751	\$5,250	100	93
<b>53090028P00 - Eastside Educational Ctr Inc</b>					
FY 2018	\$265,704	\$265,704	\$15,207	80	78
FY 2019	\$261,362	\$261,362	\$29,909	80	78

	Total Budget (\$)	Total Expenditures (\$)	Administrative Expenditures (\$)	Children To Be Served (#)	Children Actually Served (#)
<b>53090102002 - N Pekin &amp; Marquette Hght SD 102</b>					
FY 2018	\$221,138	\$216,707	\$6,619	70	75
FY 2019	\$233,529	\$226,796	\$7,213	70	75
<b>53090108002 - Pekin PSD 108</b>					
FY 2018	\$791,587	\$791,587	\$65,601	190	217
FY 2019	\$728,024	\$728,024	\$21,683	210	249
<b>53090701026 - Deer Creek-Mackinaw CUSD 701</b>					
FY 2018	\$61,800	\$61,800	\$0	20	19
FY 2019	\$130,681	\$130,681	\$0	40	43
<b>53090703026 - Delavan CUSD 703</b>					
FY 2019	\$107,220	\$107,220	\$0	40	36
<b>53102011026 - El Paso-Gridley CUSD 11</b>					
FY 2018	\$188,900	\$187,337	\$0	60	51
FY 2019	\$196,021	\$194,196	\$0	60	54
<b>53102069061 - Woodford County Spec Educ Assn</b>					
FY 2018	\$312,618	\$312,618	\$19,502	80	77
<b>53102801060 - Woodford Cty Special Ed Assoc</b>					
FY 2019	\$333,751	\$333,751	\$14,951	100	72
<b>54092118024 - Danville CCSD 118</b>					
FY 2018	\$3,199,784	\$3,199,771	\$133,619	579	615
FY 2019	\$2,550,739	\$2,375,581	\$96,143	681	703
<b>56099017002 - Channahon SD 17</b>					
FY 2019	\$143,195	\$143,195	\$0	40	42
<b>56099030C04 - Troy CCSD 30C</b>					
FY 2018	\$247,200	\$247,200	\$0	80	104
FY 2019	\$261,362	\$261,362	\$10,749	80	92
<b>56099060P00 - Godley Park District</b>					
FY 2018	\$73,737	\$73,737	\$3,000	20	20
FY 2019	\$64,737	\$64,737	\$3,180	20	21
<b>56099070C04 - Laraway CCSD 70C</b>					
FY 2018	\$470,642	\$470,642	\$0	120	127
FY 2019	\$213,191	\$213,191	\$0	60	64
<b>56099073P00 - Child Care Resource &amp; Referral</b>					
FY 2018	\$264,950	\$264,950	\$11,925	38	38
FY 2019	\$249,852	\$226,325	\$12,732	37	37
<b>56099086005 - Joliet PSD 86</b>					
FY 2018	\$1,730,400	\$1,712,870	\$819	560	494
FY 2019	\$1,829,531	\$1,829,531	\$175	560	552
<b>56099089002 - Fairmont SD 89</b>					
FY 2018	\$129,487	\$124,395	\$9,249	40	38
<b>56099091002 - Lockport SD 91</b>					
FY 2018	\$108,745	\$108,070	\$1,198	40	61
FY 2019	\$115,826	\$112,455	\$1,785	40	47
<b>56099114002 - Manhattan SD 114</b>					
FY 2019	\$280,832	\$223,522	\$0	80	59

	Total Budget (\$)	Total Expenditures (\$)	Administrative Expenditures (\$)	Children To Be Served (#)	Children Actually Served (#)
<b>56099157C04 - Frankfort CCSD 157C</b>					
FY 2018	\$113,300	\$96,817	\$0	40	37
FY 2019	\$100,000	\$95,498	\$0	40	39
<b>56099159002 - Mokena SD 159</b>					
FY 2019	\$105,811	\$105,811	\$0	30	31
<b>56099201U26 - Crete Monee CUSD 201U</b>					
FY 2018	\$432,600	\$400,477	\$0	140	160
FY 2019	\$467,252	\$457,050	\$0	140	139
<b>56099202022 - Plainfield SD 202</b>					
FY 2018	\$988,800	\$988,800	\$18,063	320	338
FY 2019	\$1,045,446	\$1,042,734	\$18,819	320	321
<b>56099209U26 - Wilmington CUSD 209U</b>					
FY 2018	\$123,600	\$123,597	\$4,332	40	41
FY 2019	\$130,681	\$130,671	\$4,324	40	40
<b>56099255U26 - Reed Custer CUSD 255U</b>					
FY 2018	\$97,232	\$96,046	\$0	40	41
FY 2019	\$97,000	\$97,000	\$0	40	39
<b>56099365U26 - Valley View CUSD 365U</b>					
FY 2018	\$523,111	\$497,816	\$9,847	100	150
FY 2019	\$900,807	\$872,766	\$21,703	300	288
<b>56099527051 - Governors State University</b>					
FY 2018	\$427,319	\$391,546	\$60,530	94	44
FY 2019	\$443,959	\$389,331	\$61,553	94	0
<b>65108016051 - The Center Resources Teach&amp;Learn</b>					
FY 2018	\$4,563,006	\$4,563,006	\$298,936	1136	1063
FY 2019	\$3,024,895	\$2,926,122	\$204,580	730	783
<b>65108504551 - Easter Seal Society Metro Chgo</b>					
FY 2019	\$1,439,024	\$1,180,205	\$19,662	356	342
<b>65108515551 - El Valor Corporation</b>					
FY 2018	\$1,116,408	\$1,116,408	\$108,747	200	213
FY 2019	\$1,308,293	\$1,308,293	\$125,129	200	225

Table 7 - Budget, Expenditure, and Service Level Totals for all Programs in FY 2018 and FY 2019

	Total Budget (\$)	Total Expenditures (\$)	Administrative Expenditures (\$)	Children To Be Served (#)	Children Actually Served (#)
FY 2018	\$319,114,579	\$315,655,241	\$9,583,852	71,429	73,312
FY 2019	\$340,603,341	\$336,511,482	\$9,767,020	75,436	73,188

# Additional Resources

---

## Quality Recognition and Improvement System

Preschool for All began to participate in the ExceleRate Illinois Quality Recognition and Improvement System (QRIS) in FY 2012. PFA programs are monitored at least once every three years. Programs that receive ISBE coaching services may be monitored more than once in an evaluation cycle. PFA programs are rated for quality based upon the Early Childhood Environment Rating Scale (ECERS-3) metric, as well as certain items of the ISBE PFA Compliance Checklist. From these metrics, the evaluated program is determined to fall into one of three Circles of Quality - Gold, Silver, or Bronze.

## Links

- **ISBE Student Information System data elements**  
<https://www.isbe.net/Pages/SIS-Data-Elements-approved-codes-and-indicators.aspx>
- **ISBE Student Information System data validation**  
<https://www.isbe.net/Documents/validations.pdf#search=sis%20validation>
- **ISBE Early Childhood Preschool for All Programs reporting webpage**  
<https://www.isbe.net/Pages/Preschool-For-All.aspx>
- **IECAM - University of Illinois Early Childhood Asset Map**  
<http://iecam.illinois.edu>
- **Preschool for All Implementation Manual**  
[https://www.isbe.net/Documents/Preschool\\_for\\_All\\_Implementation\\_Manual.pdf](https://www.isbe.net/Documents/Preschool_for_All_Implementation_Manual.pdf)

# References

---

- Department of Early Childhood. (n.d.). *EarlyChildhood: Preschool For All (PFA)*. Retrieved June 30, 2020, from Illinois State Board of Education: <https://www.isbe.net/Documents/FY1617-PFA-Biennial-Report.pdf#search=pfa%20biennial%20report>
- ExceleRate Illinois. (n.d.). *Standards and Evidence Requirements*. Retrieved June 30, 2020, from ExceleRate Illinois: <http://www.exceleerateillinoisproviders.com/docman/resources/13-overview-of-charts/file>
- IECAM. (n.d.). *Mission of IECAM*. Retrieved June 30, 2020, from Illinois Early Childhood Asset Map: <http://iecam.illinois.edu/about/mission/>
- Illinois School Code. (n.d.). *State Board of Education - Powers and Duties*. Retrieved June 30, 2020, from <http://www.ilga.gov/legislation/ilcs/ilcs4.asp?DocName=010500050HArt%2E+2&ActID=1005&ChapterID=17&SeqStart=14200000&SeqEnd=36325000>
- Rathbyn, A., West, J., & Walston, J. (2005). *Relationships between Family Risks and Children's Reading and Mathematics Growth from Kindergarten through Third Grade*. ERIC. Retrieved from <https://files.eric.ed.gov/fulltext/ED490454.pdf>



# Illinois State Board of Education

**Preschool for All – Biennial Report FY 2018 and FY 2019**

Published by the Department Early Childhood, July 2020